

## TECHNICAL DATA SHEET

### Silent MV 350/125 | Ultra Quiet In-line Duct Fan



#### KEY FEATURES

- ✓ Sound absorbent insulation
- ✓ 360° rotating connection box
- ✓ Sealed for life ball bearings
- ✓ Fitted with a 2/3 speed motors
- ✓ 5 year warranty
- ✓ IP44 rated
- ✓ Incredibly silent running
- ✓ High performance
- ✓ Significant energy savings
- ✓ Complies with building regulations
- ✓ Flexible location
- ✓ Easy maintenance

#### PRODUCT

Ultra quiet and low profile helicocentrifugal in-line fans suitable for a wide range of domestic and commercial applications. Fitted with sound absorbent insulation and manufactured with a with an adjustable two speed 230V 50Hz motor.

Easy to install and maintain, the SILENT MV fans guarantee exceptional performance with significant noise reduction.

#### APPLICATION SUITABILITY

Presenting the world's quietest in-line fan range in their class, the SILENT MV range creates a quantum leap forward in technology to improve the acoustic performance of up to 12 dB(A) compared with similar products on the market.

The SILENT MV range is the result of an intense R&D, technological and economic investment to ensure that you can be guaranteed of a product range that provides exceptional performance with significant noise reduction. Following extensive aerodynamic testing, we have been able to not only reduce the amount of noise produced, but also ensure that the noise level that is actually emitted is at a far lower frequency, providing a quiet and ambient environment.

#### INSTALLATION

Full installation guide is enclosed with all products; or sent separately in advance - if required.

#### MOTOR

Manufactured with an adjustable three speed 230V 50Hz motor.

#### FAN

The impeller is mixed flow type.

#### SERVICING / MAINTENANCE

The central body of the SILENT MV can be easily dismantled from the connections to enable rapid maintenance, without the need to interfere with the ducting.

#### WARRANTY

The SILENT MV is covered by a 5 year warranty.

#### TECHNICAL SPECIFICATIONS

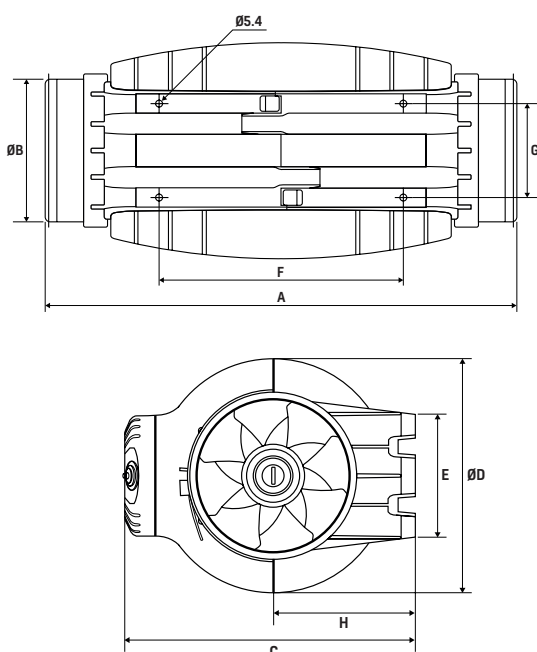
MODEL	SETTING	SILMV350/125
Speed (RPM)	Low	1650
	High	2100
Watts (W)	Low	21
	High	27
Amps (A)	Low	0.10
	High	0.12
Airflow l/s (m³/h)	Low	72 (260)
	High	96 (330)
dB(A) @ 3m	Low	18
	High	23
Max. Working Temp (°C)	Low	40
	High	
Ø Duct (mm)	Low	125
	High	

# TECHNICAL DATA SHEET

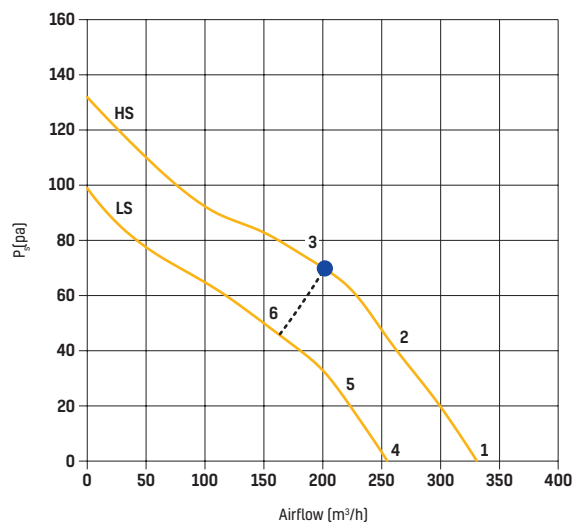
## Silent MV 350/125 | Ultra Quiet In-line Duct Fan

### DIMENSIONS (MM)

MODEL	A	ØB	C	ØD	E	F	G	H
SILMV350/125	462	123	252	204	100	250	83	121



### PERFORMANCE CURVE



### SOUND POWER

Sound power level spectrum in dB(A)										
Working Point		63	125	250	500	1000	2000	4000	8000	LWA
1	Inlet	22	26	41	51	51	43	36	29	54
	Outlet	27	28	42	50	51	44	36	28	55
	Break-Out	19	23	34	40	38	30	20	14	43
2	Inlet	21	25	41	50	50	42	37	29	53
	Outlet	25	27	40	49	50	41	35	25	53
	Break-Out	18	22	34	39	37	29	21	15	42
3	Inlet	23	30	45	53	51	46	40	31	56
	Outlet	23	31	44	51	49	43	38	31	54
	Break-Out	20	27	38	42	39	32	24	17	45
4	Inlet	21	24	39	45	46	36	29	25	49
	Outlet	23	25	39	43	44	35	29	24	48
	Break-Out	18	25	32	35	33	22	14	13	39
5	Inlet	21	25	38	44	46	35	31	25	49
	Outlet	22	26	37	42	43	33	29	24	47
	Break-Out	18	25	31	34	34	22	16	13	38
6	Inlet	23	29	40	49	49	41	35	27	52
	Outlet	24	34	40	47	46	38	33	26	50
	Break-Out	19	30	33	38	36	27	20	16	42