

TECHNICAL DATA SHEET

Silent MV 500/150 | Ultra Quiet In-line Duct Fan



KEY FEATURES

- ✓ Sound absorbent insulation
- ✓ 360° rotating connection box
- ✓ Sealed for life ball bearings
- ✓ Fitted with a 2/3 speed motors
- ✓ 5 year warranty
- ✓ IP44 rated
- ✓ Incredibly silent running
- ✓ High performance
- ✓ Significant energy savings
- ✓ Complies with building regulations
- ✓ Flexible location
- ✓ Easy maintenance

PRODUCT

Ultra quiet and low profile helicocentrifugal in-line fans suitable for a wide range of domestic and commercial applications. Fitted with sound absorbent insulation and manufactured with a with an adjustable two speed 230V 50Hz motor.

Easy to install and maintain, the SILENT MV fans guarantee exceptional performance with significant noise reduction.

APPLICATION SUITABILITY

Presenting the world's quietest in-line fan range in their class, the SILENT MV range creates a quantum leap forward in technology to improve the acoustic performance of up to 12 dB(A) compared with similar products on the market.

The SILENT MV range is the result of an intense R&D, technological and economic investment to ensure that you can be guaranteed of a product range that provides exceptional performance with significant noise reduction. Following extensive aerodynamic testing, we have been able to not only reduce the amount of noise produced, but also ensure that the noise level that is actually emitted is at a far lower frequency, providing a quiet and ambient environment.

INSTALLATION

Full installation guide is enclosed with all products; or sent separately in advance - if required.

MOTOR

Manufactured with an adjustable three speed 230V 50Hz motor.

FAN

The impeller is mixed flow type.

TECHNICAL SPECIFICATIONS

MODEL	SETTING	SILMV500/150
Speed (RPM)	Low	1610
	Medium	2060
	High	2480
Watts (W)	Low	45
	Medium	50
	High	59
Amps (A)	Low	0.20
	Medium	0.22
	High	0.26
Airflow l/s (m³/h)	Low	97 [350]
	Medium	125 [450]
	High	153 [550]
dB(A) @ 3m	Low	17
	Medium	22
	High	27
Max. Working Temp (°C)	Low	60
	Medium	
	High	
Ø Duct (mm)	Low	150
	Medium	
	High	

TECHNICAL DATA SHEET

Silent MV 500/150 | Ultra Quiet In-line Duct Fan

SERVICING / MAINTENANCE

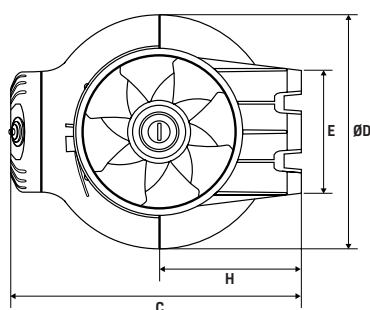
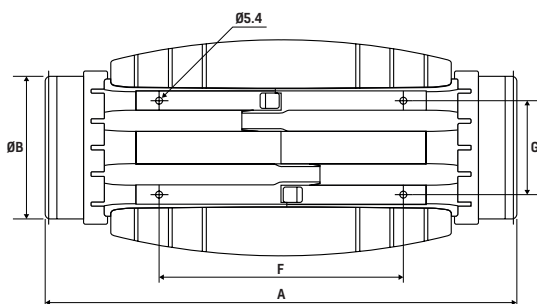
The central body of the SILENT MV can be easily dismantled from the connections to enable rapid maintenance, without the need to interfere with the ducting.

WARRANTY

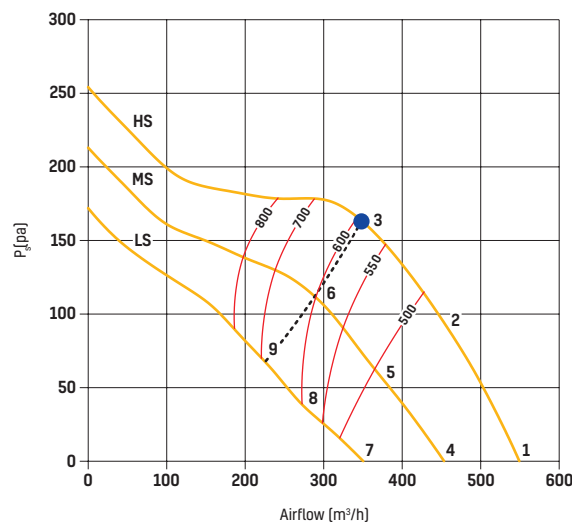
The SILENT MV is covered by a 5 year warranty.

DIMENSIONS (MM)

MODEL	Ø	A	ØB	C	ØD	E	F	G	H
SILMV500/150		484	147	274	221	116	250	96	134



PERFORMANCE CURVE



SOUND POWER

Sound power level spectrum in dB(A)										
Working Point		63	125	250	500	1000	2000	4000	8000	LwA
1	Inlet	25	35	52	59	59	58	52	46	64
	Outlet	38	38	56	59	58	54	49	43	63
	Break-Out	18	28	41	40	43	41	33	28	47
2	Inlet	24	34	50	57	56	55	48	41	62
	Outlet	33	36	54	56	57	51	45	38	61
	Break-Out	17	26	39	38	40	39	29	24	45
3	Inlet	25	35	49	59	56	54	48	41	62
	Outlet	26	36	53	59	57	49	44	28	62
	Break-Out	18	28	38	40	40	37	29	24	45
4	Inlet	20	31	48	54	54	53	48	41	60
	Outlet	33	34	51	54	54	49	45	39	59
	Break-Out	13	23	36	36	38	36	29	24	43
5	Inlet	19	29	45	52	52	51	43	36	57
	Outlet	28	31	49	52	53	46	40	34	57
	Break-Out	12	21	34	33	35	34	24	19	40
6	Inlet	20	30	45	54	51	50	43	36	57
	Outlet	21	32	49	54	52	45	39	24	57
	Break-Out	14	23	33	35	35	33	24	19	40
7	Inlet	15	25	42	49	49	48	42	36	54
	Outlet	28	28	46	49	48	44	39	33	54
	Break-Out	8	18	31	30	33	31	23	18	38
8	Inlet	13	23	40	46	46	45	37	30	51
	Outlet	22	25	43	46	47	40	34	28	51
	Break-Out	7	16	28	28	29	28	18	13	34
9	Inlet	15	25	39	49	46	44	38	31	52
	Outlet	16	26	43	49	47	39	34	18	52
	Break-Out	8	17	28	30	29	27	19	13	35