

# MEV SPIDER

Mechanical Extract Ventilation



# MEV SPIDER

Mechanical Extract Ventilation



## About

The MEV Spider from EnviroVent is a low energy, continuous mechanical extract ventilation system designed with multiple extract points to simultaneously draw moisture-laden air out of the wet rooms, whilst minimising the migration of humidity to other rooms.

## Features & Benefits

- Fitted with Ultra Low Watt DC motor technology
- Intellitrac® humidity tracking
- 9 spigot connection points
- 3x Ø100mm spigots supplied
- Low specific fan power of 0.28W/l/s
- Rapid installation
- Vertical or horizontal install
- Ease of maintenance
- Low profile of just 198mm
- Low noise
- Cost effective
- Lowest carbon footprint
- SAP PCDB Listed
- 2 year warranty



## How does it work?

The extract unit is centrally located in a cupboard or loft, with ducts running from the unit to the kitchen, bathroom, en-suite and other wet zones. Ideal for use in houses, apartments and communal residences, the MEV Spider is designed specifically for incorporation within a system for a kitchen plus up to 6 additional wet rooms. Providing high centrifugal performance with low running noise, the unit is SAP PCDB Listed and comes with a full five year warranty.

## Some of the Benefits

### ✓ Rapid Installation

The compact size of the unit and its unique spigot configuration allows easy installation into any vertical or horizontal application and is ideal for restricted spaces. With up to nine spigot connection points the unit offers optimal versatility.

The easy push button commissioning pad enables the installer to correctly set the required airflow rate quickly and effectively.

### ✓ Intellitrac® Controls

The system continuously operates at a low level to ensure that the home is correctly ventilated, providing all year round good indoor air quality. Incorporated within the MEV Spider is the unique Intellitrac® Technology as standard, which constantly monitors the humidity level, meaning no user intervention is required.

As humidity rises and falls, the motor speed rises and falls in direct correlation. This controls condensation quietly and efficiently, reducing the periods of time when the system operates on maximum speed, saving energy.



## ✓ Ease of Installation

The compact size of the unit and its unique spigot configuration allows easy installation into any vertical or horizontal application and is ideal for restricted spaces.

With up to 9 spigot connection points the unit offers optimal versatility. Quick fit spigots provide convenience for the installer.



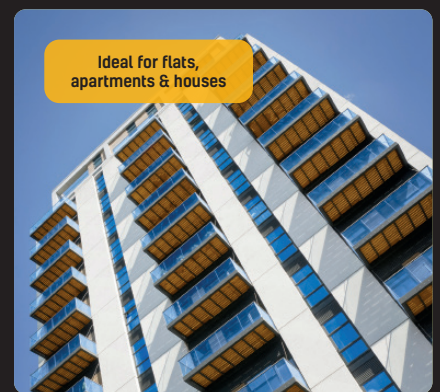
Wall



Ceiling



Floor



Ideal for flats, apartments & houses



## Control Options

A remote control boost switch is included with the wireless version of the unit, offering ultimate control to the user. The unit is fully commissionable to high and low rates to ensure optimum performance and efficiency.



## SAP Appendix Q Performance

Exhaust Terminal Configuration - Kitchen + Additional Wet Rooms	Fan Speed Setting	Specific Fan Power (W/l/s)	EST Best Practice Performance Compliant
Kitchen + 1 additional wet room	100% Variable	0.30	Yes
Kitchen + 2 additional wet rooms	100% Variable	0.28	Yes
Kitchen + 3 additional wet rooms	100% Variable	0.29	Yes
Kitchen + 4 additional wet rooms	100% Variable	0.32	Yes
Kitchen + 5 additional wet rooms	100% Variable	0.36	Yes
Kitchen + 6 additional wet rooms	100% Variable	0.38	Yes

## Technical Specification

### Product

Innovative and low energy unit which has been designed to provide continuous mechanical extract ventilation in accordance with current building regulations.

### Application Suitability

To be installed in any vertical or horizontal application either in a hallway cupboard or loft space. The unit shall be designed with up to 9 quick fit spigot connection points.

### Performance

	Exhaust Terminal Configuration - Kitchen + Additional Wet Rooms					
	+1	+2	+3	+4	+5	+6
Total Flow Rate (l/s)	21	29	37	45	53	61
Specific Fan Power (W/l/s)	0.30	0.28	0.29	0.32	0.36	0.38

### Motor

The unit shall incorporate the Ultra Low Watt DC motor technology with sealed for life ball bearings designed to operate continuously at a pre-set 'background' rate.

### Fan

The unit shall incorporate a backward curved centrifugal fan.

### Construction

The unit shall be constructed from durable white plastic. The lid is a vacuum in HIPS material.

### Servicing / Maintenance

There are no special requirements for any maintenance within a five year period. If fitted with cone filters (located at extract valves), maintenance is recommended every 12 months depending on environmental conditions. The unit shall be easy to clean by simply removing the lid and motor plate.

### Warranty

The unit shall be covered by an on-going, repeatable 2 year warranty, subject to completion of the specified maintenance.

### Controls

The standard unit shall be fitted with Intellitrac® humidity tracking system, commissionable to trickle and boost to suit the application and satisfy Part F. The unit shall also be fitted with -a choice of either wireless or manual override switching.

### Accreditations

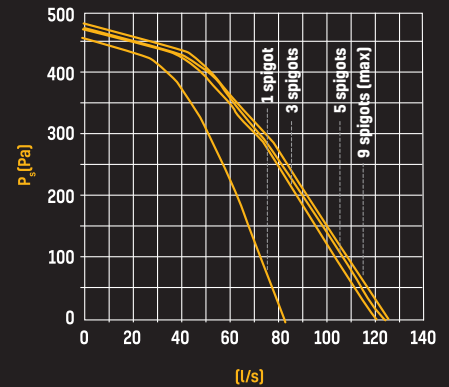
Conforms to the requirements of the UK Building Regulations and the Technical Standards for Ventilation.

Conforms to requirements of the EC council directives relating to Electromagnetic Compatibility and Electrical Safety (LDV and EMC). CE Marked.

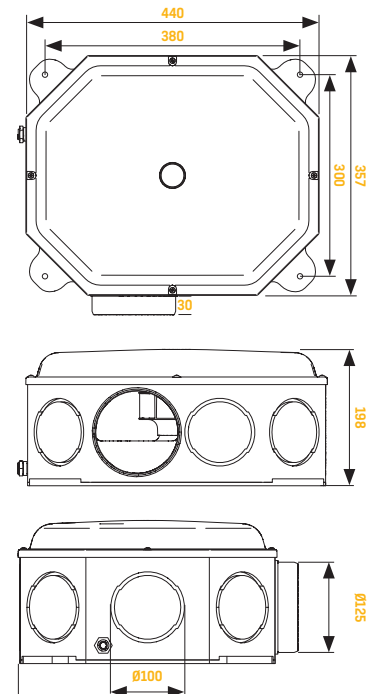
SAP PCDB Listed.



## Performance Curve



## Dimensions (mm)



## Options & Ancillaries

DESCRIPTION	CODE(S)
Ø100MM RIGID DUCTING (3M LENGTH)	1RD 100 X 3M
Ø100MM FLEXIBLE INSULATED HOSE DUCTING	1RD INSFLEX 100
Ø100MM WHITE POWDER COATED METAL CEILING VALVE	1DIF EXTRACT 100
Ø125MM RIGID DUCTING (3M LENGTH)	1RD 125 X 3M
Ø125MM WHITE POWDER COATED METAL CEILING VALVE	1DIF EXTRACT 125
Ø125MM FLEXIBLE INSULATED HOSE DUCTING	1RD INSFLEX 125

# envirovent®

Leaders in the manufacture of innovation  
and sustainable ventilation

EnviroVent Ltd  
EnviroVent House  
Hornbeam Business Park  
Harrogate  
HG2 8PA

T / 0345 27 27 807  
F / 01423 301 022  
E / [enquiries@envirovent.com](mailto:enquiries@envirovent.com)  
W / [www.envirovent.com](http://www.envirovent.com)

Due to our policy of continuous innovation and improvement, EnviroVent reserves the right to alter products specification and appearance without notice.

E&OE | MKT ENV406 - V1 - 21.01.20

Copyright © EnviroVent Ltd 2020



Follow us on  
**facebook**



Follow us on  
**twitter**



Watch us on  
**Youtube**



Follow us on  
**Instagram**



Follow us on  
**Pinterest**



Find us on  
**LinkedIn**

