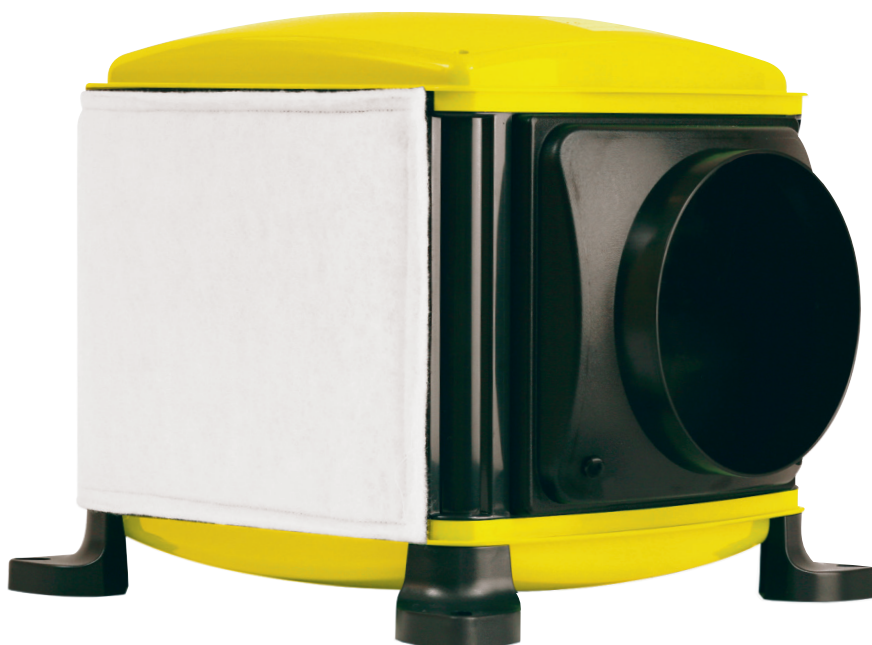


TECHNICAL DATA SHEET

damppro | Whole House Positive Input Ventilation Unit DP-EVL-H



PRODUCT

Whole house positive input ventilation system for dwellings with a loft space.

APPLICATIONS

The whole house PIV Loft Mounted unit is manufactured in the UK and installed in dwellings with a loft space to meet local Building Regulations.

MAINTENANCE

EnviroVent recommend that filters are checked regularly and replaced as required. Areas with high particulate matter for example industrial areas, or higher-grade filters will become clogged quicker and will need replacing more frequently. Spare and replacement filters must be genuine EnviroVent parts.

PERFORMANCE & SOUND LEVELS AS INSTALLED

| Incoming Air Temp. (°C) | Fan Speed Setting | Specific Fan Power (SFP) | Airflow (l/s) | Power Usage (W) (3) | Outlet Noise dB(A) @3m |
|-------------------------|-------------------|--------------------------|---------------|---------------------|------------------------|
| <19 (1) (2) | Trickle | 0.17 | 21 | 4 | <15 |
| | Medium | 0.15 | 29 | 4 | <15 |
| | Large | 0.16 | 38 | 6 | <15 |
| | Boost | 0.19 | 49 | 9 | 15 |

1. Above 19°C the unit increases airflow rates per setting by 10%.
 2. The unit switches to Summer Mode at air temperatures at or above 25°C.
 3. Power usage with Comfort Heater disabled.

TECHNICAL DATA SHEET

damppro | Whole House Positive Input Ventilation Unit DP-EVL-H

INSTALLATION

A full installation guide can be provided or sent separately in advance - if required. For 3 floor properties or properties above 4.5m this unit should be fitted with a steel diffuser (contact EnviroVent for specific fire diffuser codes).

INTEGRAL INTELLIGENT COMFORT HEATER

During cold periods, the unit is capable of maintaining the incoming air temperature consistently at 10°C. The integral heater element is manufactured in a solid tubular sheath material.

MOTOR

Incorporates the Ultra Low Watt DC motor technology with sealed for life ball bearings designed to operate continuously at a pre-set 'background' rate.

FAN

Is a 140 x 220mm centre mounted forward curved centrifugal fan.

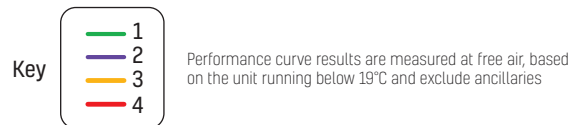
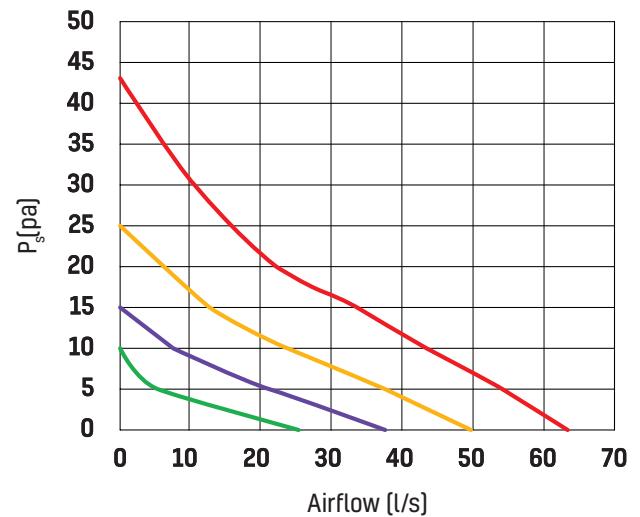
FILTER

These units come as standard with a G4 ISO coarse 65% wrap around filter in accordance with EN779 standard ratings. Higher filtration is available if required. For replacement filters please contact your local domestic ventilation specialist.

WARRANTY

The EnviroVent Damp Pro units are covered by a parts only 5-year warranty. Please note that conditions and exclusions apply to the warranty which can be found at www.envirovent.com/warranty

PERFORMANCE CURVE AT FREE AIR



DIMENSIONS (MM)

