

envirovent®

## EBB *Design* RANGE

Centrifugal WC, Bathroom & Kitchen Fan



envirovent.

# EBB Design RANGE

Centrifugal WC, Bathroom & Kitchen Fan



## About

The EBB Design extractor fan is suitable for WC, bathroom & kitchen applications where higher system resistance pressures are encountered.

The fan has a forward curved centrifugal impeller with single phase motor 230V-50Hz and Class II insulation. Maximum operating temperature 40°C.

- Powerful forward curved centrifugal impellers
- Automatic backdraught shutter as standard
- IP44 rated
- 2 year warranty
- High performance
- Significant energy savings
- Quiet operation



## Features

### Adjustable Run-On Timer



Adjustable Run-On Timer from 1-30 minutes.

### Humidity Sensor



Internal humidity sensor which automatically switches on the unit when the relative humidity rises above the selected set level; pullcord or remote switch.

### Dual Speed

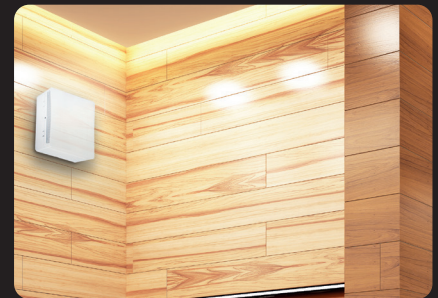


The EBB 175 Design comes in both 1 and 2 speed versions.

### Pullcord



Supplied with pullcord override.



The EBB Design options have different features, making it a perfect solution for many different scenarios. The forward curved impeller makes it ideal for systems with longer duct runs and higher resistances.

ORDER CODE	EBBDES-175S	EBBDES-175T	EBBDES-175HM
Automatic Backdraught Shutter	•	•	•
Single Speed	•	•	
Two Speed			•
ON / OFF Pullcord			•
Adjustable Run-On Timer		•	
Humidity Sensor			•

## Backdraught Shutter

The EBB Design fans are fitted with an automatic back draft shutter to prevent air entry and limit heat leakage when the extractor is not operating.

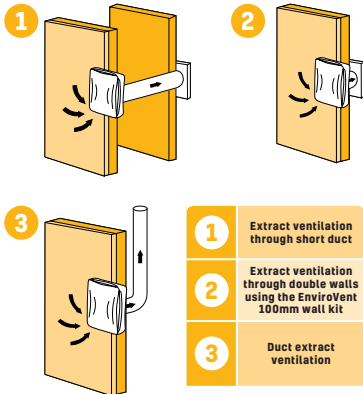


## Forward Curved Centrifugal Impeller

To deliver high performance with a minimum noise level against high static pressure system resistance.



## Installation Options



## Technical Specification

### Product

The EBB Design are centrifugal extract fans ideally suited for WC, bathroom & kitchen ventilation where higher system resistances are encountered. The fans are fitted with an automatic backdraught shutter as standard.

### Applications

The EBB Design can be wall or ceiling mounted.

### Performance

MODEL	EBB 175 DESIGN	
	LS	HS
SPEED (RPM)	930	1250
WATTS (W)	17	26
VOLTAGE (V) 50Hz	230	230
AIRFLOW l/s (m³/h)	22 (80)	43 (155)
dB(A) @ 1.5m	33	41
WEIGHT (Kg)	2.2	
IP RATING	IP44	
Ø DUCT (mm)	98	

### Installation

Full installation guide is enclosed with all products; or sent separately in advance - if required.

### Motor

Single phase motor 230V-50Hz.

### Fan

The impeller is a powerful forward curved centrifugal fan to deliver high performance against high static pressure resistance.

### Servicing / Maintenance

For cleaning purposes, the outer cover should be removed. The filter and the grille may be cleaned by hand in hot soapy water and the extractor housing wiped with a damp cloth.

### Warranty

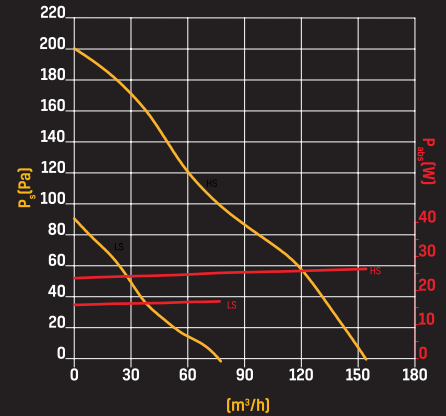
Is covered by a 2 year warranty subject to the specified maintenance.

### Compliance

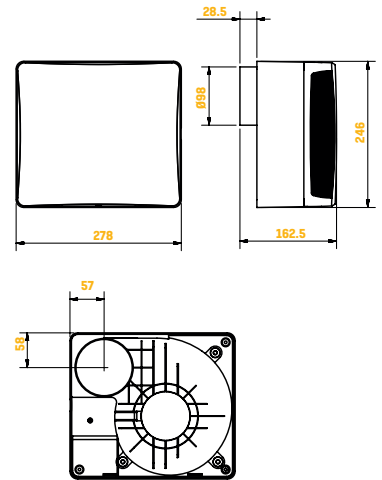
CE Marked.



## Performance Curve EBB 175 DESIGN



## Dimensions (mm) EBB 175 DESIGN



## Options & Ancillaries

DESCRIPTION	CODE(S)
STANDARD WALL KIT	1RDEFWAK100
HIGH RISE INSTALLATION KIT	1RDEFPTK
ROUND DUCTING CHANNEL	1RD100X2M
CONDENSATION TRAP	1RDCONTRAP100
FIXED LOUVRE GRILL	1RDGRILL100
FLAT CHANNEL DUCTING	1FD204X602M

# envirovent®

Leaders in the manufacture of innovation and sustainable ventilation

EnviroVent Ltd  
Harrogate West Business Park  
Unit 1 Bardner Bank  
Killinghall, Harrogate  
HG3 2SP

T / 01423 810 810  
E / enquiries@envirovent.com  
W / www.envirovent.com

Due to our policy of continuous innovation and improvement, EnviroVent reserves the right to alter products specification and appearance without notice.

E&OE | MKT ENV477 - V5 - 03/12/2024

Copyright © EnviroVent Ltd 2024



Follow us on  
**facebook**



Follow us on  
**twitter**



Watch us on  
**Youtube**



Follow us on  
**Instagram**



Follow us on  
**Pinterest**



Find us on  
**LinkedIn**

