

envirovent[®]

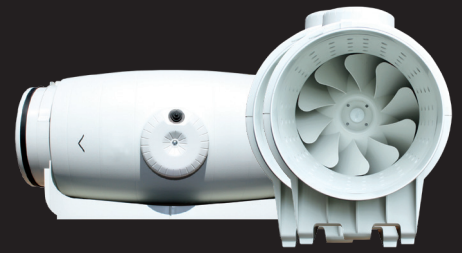
SILENT MV ECOWATT

Energy Ultra Quiet In-Line Duct Fans



SILENT MV ECOWATT

Low Energy Ultra Quiet In-Line Duct Fans



About

Continuous running ultra quiet and low profile mixed flow in-line fans suitable for a wide range of domestic and commercial applications. Fitted with sound absorbent insulation and manufactured with a single phase EC motor.

Easy to install and maintain, the SILENT MV fans guarantee exceptional performance with significant noise reduction.

- ▶ Continuous running fan
- ▶ Sound absorbent insulation
- ▶ 360° rotating connection box
- ▶ Sealed for life ball bearings
- ▶ 100% adjustable fan speed
- ▶ 5 year warranty
- ▶ IP44 rated
- ▶ Incredibly silent running
- ▶ High performance
- ▶ Significant energy savings
- ▶ Flexible location
- ▶ Easy maintenance



PRESENTING THE WORLD'S QUIETEST IN-LINE FANS

Presenting the world's quietest in-line fan range in their class, the SILENT MV ECOWATT range creates a quantum leap forward in technology to improve the acoustic performance of up to 12 dB(A) compared with similar products on the market.

The SILENT MV ECOWATT range is the result of an intense R&D, technological and economic investment to ensure that you can be guaranteed of a product range that provides exceptional

performance with significant noise reduction. Following extensive aerodynamic testing, we have been able to not only reduce the amount of noise produced, but also ensure that the noise level that is actually emitted is at a far lower frequency, providing a quiet and ambient environment.

Versatility

The SILENT MV ECOWATT range offers one of the most versatile fan systems on the market. Due to its flexibility it can be used in a multitude of installations.

Especially advantageous where the system is required to run continuously, the acoustic benefits of the SILENT MV ECOWATT fans ensure that optimum comfort is achieved without the disturbance of noisy ventilation systems.

CLASSROOMS



OFFICES



PUBLIC SPACES



LIBRARIES



ONCE INSTALLED, YOU'LL NEVER KNOW IT EXISTS

Unique Design

The unique perforated design of the casing directs sound waves into the high density sound absorbent material to prevent air leakage and minimise noise.



Controls

SILENT MV ECOWATT units can be controlled in multiple ways:

- 100% adjustable potentiometer located in the connection box.
- REB-ECO speed controller.
- AirSens single phase controllers (CO₂, VOC, RH and Temp)



Rotating Connection Box

The connection box can be rotated 360° to enable the power cable to be easily connected.



Rubber Seals

Bi-material inlet and outlet incorporating a rubber seal to facilitate installation and absorb vibrations.



Wall



Ceiling

How does it work?

Sound waves produced inside the SILENT MV ECOWATT are directed through the perforated inner cover and absorbed by the layer of sound absorbent material.

Ease of Maintenance

The central body of the unit can be easily dismantled from the connections to enable rapid maintenance, without the need to interfere with the ducting.

Ease of Installation



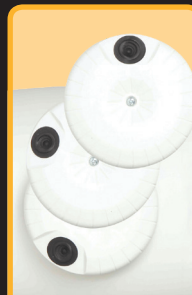
LOOSEN THE FIXING CLAMPS



OPEN CLAMPS ON BOTH SIDES



REMOVE THE FAN BODY



REMOVE THE TERMINAL BOX LID

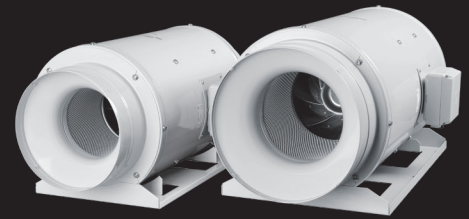


WIRE THE UNIT



REPLACE BODY & TIGHTEN CLAMPS

SILMV1300/250 SILMV2000/315 ECOWATT

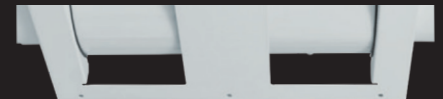


The SILENT MV 1300/250 ECOWATT and SILENT MV 2000/315 ECOWATT are in-line mixed flow fans that retain the same philosophy as the rest of the SILENT MV ECOWATT range; to improve comfort whilst achieving a substantial reduction in radiated noise level, without sacrificing airflow performance and ease of installation.

These units differ from other sizes as they are constructed from sheet steel which is protected by a tough epoxy polyester paint coating and also have IP55 rated Terminal boxes.

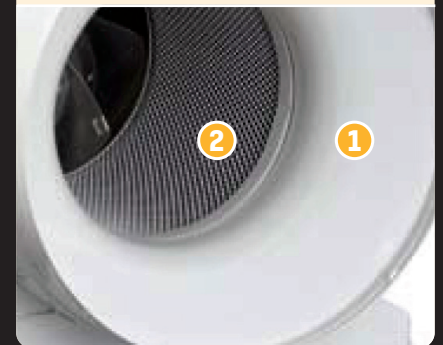
Support Bracket

Suitable for wall or ceiling mounting, fixing brackets to the motor body are included.



Low Noise Level

- Aerodynamic inlet to improve airflow and reduce sound
- Attenuating perforated skin

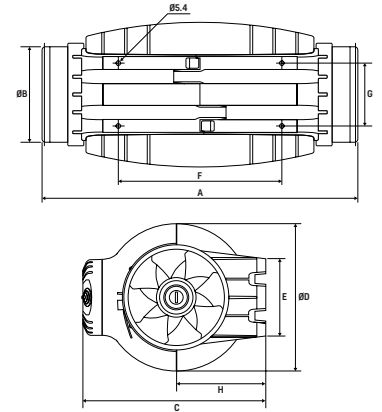


Technical Data

MODEL/ORDER CODE	Speed (RPM)		Watts (W)	Amps (A)	Airflow (m ³ /h)	Ø Duct (mm)
	10	8				
SILMV350/100-125 ECO	10	2235	19	0.14	350	100/125
	8	2000	15	0.11	305	
	6	1580	10	0.07	240	
	4	1170	7	0.06	180	
SILMV500/150 ECO	10	2510	39	0.25	545	150
	8	2300	32	0.23	500	
	6	1800	18	0.13	390	
	4	1320	10	0.08	240	
SILMV1000/200 ECO	10	2470	99	0.66	1.000	200
	8	2120	64	0.46	860	
	6	1660	34	0.25	675	
	4	1220	17	0.12	485	
SILMV1300/250 ECO	10	2460	143	0.6	1.240	250
	8	2035	88	0.4	1.040	
	6	1645	54	0.3	810	
	4	1200	29	0.2	580	
SILMV2000/315 ECO	10	2520	247	1.0	1.660	315
	8	2075	146	0.6	1.380	
	6	1690	85	0.4	1.120	
	4	1230	41	0.2	790	

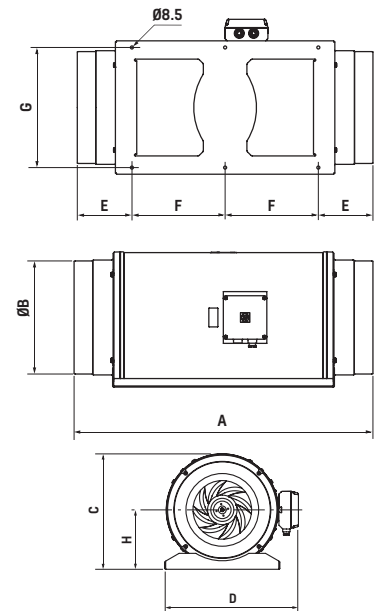
Dimensions (mm)

**350/100-125 | 500/150
| 800/200 | 1000/200**



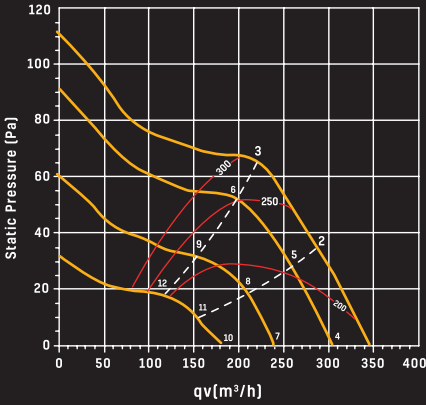
MODEL	A	ØB	C	ØD	E	F	G	H
SILMV350/100-125ECO	575 /462	97 /123	252	204	100	250	83	121
SILMV500/150ECO	484	147	274	221	116	250	96	134
SILMV800/200ECO	568	198	327	264	145	340	129	164
SILMV1000/200ECO	568	198	327	264	145	340	129	164

1300/250 | 2000/315



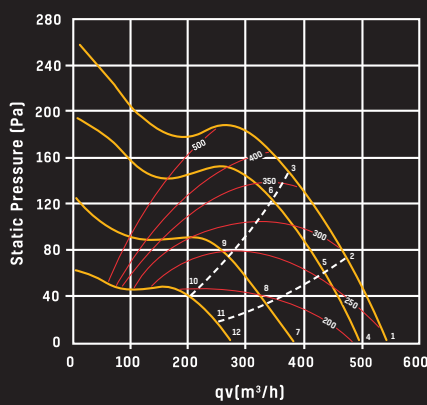
MODEL	A	ØB	C	D	E	F	G	H
SILMV1300/250ECO	680	248	331	387	140	200	280	171
SILMV2000/315ECO	825	312	373	432	152	260	335	192

Performance Curve SILMV350/100-125 ECO



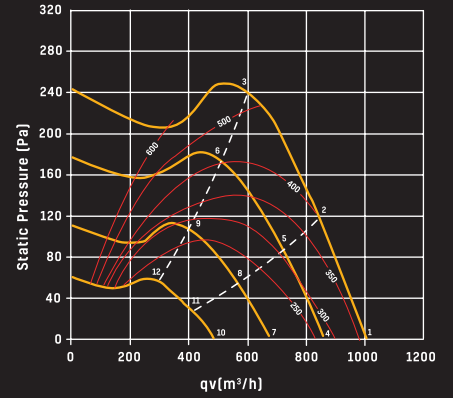
Sound power level spectrum in dB(A)										
Working Point		63	125	250	500	1000	2000	4000	8000	LwA
1	Inlet	19	26	42	54	50	44	37	30	56
	Outlet	33	31	41	52	50	44	37	29	55
	Break-Out	17	25	38	48	42	35	28	19	50
2	Inlet	19	25	42	54	48	42	37	29	55
	Outlet	27	28	41	52	48	40	35	29	54
	Break-Out	17	25	38	48	40	33	27	19	49
3	Inlet	25	31	41	53	48	45	39	32	55
	Outlet	25	32	41	51	47	41	38	31	53
	Break-Out	23	30	38	47	40	36	29	21	49
4	Inlet	25	26	44	53	47	41	34	27	55
	Outlet	29	28	42	54	46	40	32	26	55
	Break-Out	23	25	41	47	39	32	24	16	49
5	Inlet	22	25	44	53	45	39	34	26	54
	Outlet	23	27	42	54	44	37	32	26	54
	Break-Out	20	24	41	47	37	30	24	16	48
6	Inlet	25	29	41	52	45	42	35	28	54
	Outlet	24	30	40	50	43	38	34	27	52
	Break-Out	23	29	38	46	37	33	26	18	48
7	Inlet	23	24	44	45	41	33	28	24	49
	Outlet	27	28	47	42	40	31	26	24	49
	Break-Out	20	24	44	41	34	23	21	22	46
8	Inlet	23	27	44	43	39	31	28	24	47
	Outlet	21	27	45	42	38	29	26	24	47
	Break-Out	20	27	44	39	32	21	21	22	45
9	Inlet	22	27	43	42	40	35	29	24	47
	Outlet	22	28	44	41	38	30	27	24	47
	Break-Out	20	27	43	38	33	25	22	22	44
10	Inlet	16	17	37	39	35	26	21	17	42
	Outlet	20	22	40	35	33	24	19	17	42
	Break-Out	16	17	37	34	31	20	19	17	40
11	Inlet	16	21	37	36	33	24	22	17	41
	Outlet	14	21	38	35	31	22	19	17	41
	Break-Out	16	21	37	32	29	18	20	17	39
12	Inlet	16	21	36	36	33	28	23	18	40
	Outlet	15	22	38	34	31	24	20	17	40
	Break-Out	16	21	36	31	30	22	21	18	38

Performance Curve SILMV500/150 ECO



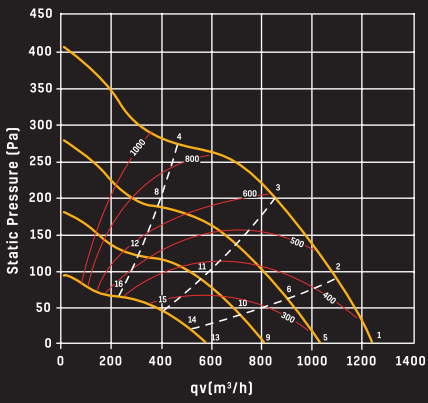
Sound power level spectrum in dB(A)										
Working Point		63	125	250	500	1000	2000	4000	8000	LwA
1	Inlet	22	33	52	60	60	60	54	45	65
	Outlet	37	36	53	61	60	55	49	42	64
	Break-Out	10	27	45	50	49	46	41	31	54
2	Inlet	22	30	50	59	59	59	50	42	64
	Outlet	35	33	52	60	59	52	45	38	63
	Break-Out	11	24	43	49	48	44	37	29	53
3	Inlet	21	29	51	59	57	55	49	43	63
	Outlet	30	29	51	59	57	50	44	38	62
	Break-Out	10	23	45	49	47	41	36	29	53
4	Inlet	22	31	48	56	58	58	50	41	63
	Outlet	33	33	50	57	58	53	46	38	62
	Break-Out	23	28	41	47	47	44	39	27	52
5	Inlet	24	28	47	54	56	57	47	38	61
	Outlet	31	30	50	57	57	50	42	34	61
	Break-Out	25	25	39	46	45	43	36	25	50
6	Inlet	23	28	45	53	55	51	45	38	59
	Outlet	25	28	49	54	54	46	40	33	58
	Break-Out	23	24	38	44	45	37	34	25	49
7	Inlet	26	28	43	51	54	55	42	32	58
	Outlet	25	27	45	51	54	51	37	29	57
	Break-Out	14	22	37	44	45	40	29	20	48
8	Inlet	30	25	42	50	53	49	39	31	56
	Outlet	25	26	44	50	52	42	33	27	55
	Break-Out	19	20	36	40	44	34	27	19	46
9	Inlet	32	29	41	49	51	43	37	29	54
	Outlet	24	26	44	49	49	39	32	26	53
	Break-Out	20	24	36	40	43	28	24	17	45
10	Inlet	19	25	37	49	46	37	29	25	51
	Outlet	19	25	37	49	46	37	29	25	51
	Break-Out	26	25	36	40	41	24	21	22	44
11	Inlet	20	25	37	49	44	34	28	25	50
	Outlet	19	26	40	50	44	29	25	24	51
	Break-Out	27	26	36	39	39	21	20	22	43
12	Inlet	19	26	37	50	41	31	27	24	51
	Outlet	21	26	40	50	44	28	24	24	51
	Break-Out	27	27	36	41	36	19	18	21	43

Performance Curve SILMV1000/200 ECO



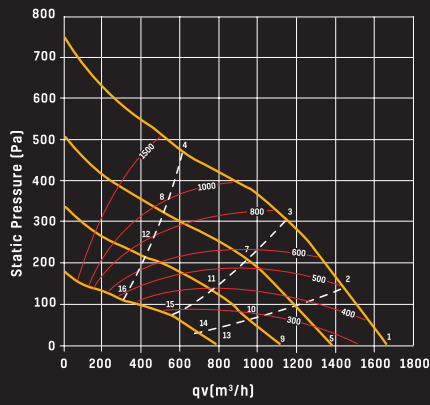
Sound power level spectrum in dB(A)										
Working Point		63	125	250	500	1000	2000	4000	8000	LwA
1	Inlet	29	42	60	58	62	60	56	48	67
	Outlet	35	45	61	67	72	65	55	45	74
	Break-Out	21	29	43	48	51	47	39	36	55
2	Inlet	30	43	58	58	61	59	54	48	66
	Outlet	30	46	61	68	71	63	53	44	73
	Break-Out	22	29	41	48	51	46	37	36	54
3	Inlet	36	48	60	59	58	57	52	44	65
	Outlet	33	52	64	67	68	61	51	41	71
	Break-Out	28	35	44	49	47	44	35	32	53
4	Inlet	28	40	59	54	59	56	51	43	64
	Outlet	29	42	60	62	67	59	49	39	69
	Break-Out	22	25	40	39	50	44	38	35	52
5	Inlet	29	40	57	55	57	54	49	43	62
	Outlet	27	43	59	62	65	58	47	38	68
	Break-Out	23	25	39	40	48	42	36	35	51
6	Inlet	34	45	57	56	54	53	48	40	62
	Outlet	30	48	60	62	63	56	46	36	67
	Break-Out	28	30	38	42	45	41	34	31	48
7	Inlet	26	36	52	52	55	49	44	36	58
	Outlet	27	39	60	57	60	54	43	33	64
	Break-Out	20	19	40	41	50	37	32	31	51
8	Inlet	26	37	51	51	52	47	43	36	57
	Outlet	28	40	57	57	58	52	41	33	63
	Break-Out	21	20	40	41	48	36	31	31	50
9	Inlet	30	41	52	51	50	46	40	34	56
	Outlet	28	46	55	56	57	50	38	31	61
	Break-Out	25	24	40	40	46	34	28	29	48
10	Inlet	23	34	45	47	45	40	34	30	51
	Outlet	24	41	48	50	50	44	33	29	55
	Break-Out	14	22	37	44	42	32	30	29	47
11	Inlet	24	34	45	45	44	39	34	30	50
	Outlet	33	40	48	49	49	43	44	29	54
	Break-Out	14	22	37	41	40	31	30	29	45
12	Inlet	26	37	45	43	43	37	32	30	49
	Outlet	26	41	48	47	48	41	31	29	53
	Break-Out	17	25	36	39	39	29	27	29	44

Performance Curve SILMV1300/250 ECO



Sound power level spectrum in dB(A)										
Working Point	63	125	250	500	1000	2000	4000	8000	LwA	
1	Inlet	29	42	60	58	62	60	56	48	67
	Outlet	35	45	61	67	72	65	55	45	74
	Break-Out	21	29	43	48	51	47	39	36	55
2	Inlet	30	42	58	58	62	59	55	48	66
	Outlet	32	45	61	67	71	64	54	45	73
	Break-Out	22	29	42	48	51	46	38	36	54
3	Inlet	33	45	59	58	59	58	53	46	65
	Outlet	32	49	62	67	69	62	52	43	72
	Break-Out	25	32	43	49	49	45	36	34	53
4	Inlet	36	48	60	59	58	57	52	44	65
	Outlet	33	52	64	67	68	61	51	41	71
	Break-Out	28	35	44	49	47	44	35	32	53
5	Inlet	28	40	59	54	59	56	51	43	64
	Outlet	29	42	60	62	67	59	49	39	69
	Break-Out	22	25	40	39	50	44	38	35	52
6	Inlet	28	40	58	55	58	54	50	43	63
	Outlet	28	43	60	62	66	58	48	38	69
	Break-Out	23	25	39	40	49	43	37	35	51
7	Inlet	31	43	57	56	56	53	49	41	62
	Outlet	29	46	60	63	64	57	47	37	68
	Break-Out	26	28	39	42	47	41	35	33	49
8	Inlet	34	45	56	56	53	52	47	39	61
	Outlet	30	48	59	62	62	56	45	35	66
	Break-Out	28	30	38	41	44	40	34	31	48
9	Inlet	26	36	52	52	55	49	44	36	58
	Outlet	27	39	60	57	60	54	43	33	64
	Break-Out	20	19	40	41	50	37	32	31	51
10	Inlet	26	37	52	52	53	48	44	36	58
	Outlet	27	40	58	57	59	53	42	33	63
	Break-Out	21	20	40	41	49	36	31	31	50
11	Inlet	29	40	52	52	52	48	43	36	58
	Outlet	28	43	57	57	58	52	41	32	63
	Break-Out	23	3	40	41	47	36	30	30	49
12	Inlet	31	42	52	51	50	46	40	33	56
	Outlet	28	47	55	56	56	50	38	31	61
	Break-Out	26	25	40	40	46	34	28	28	48

Performance Curve SILMV2000/315 ECO



Sound power level spectrum in dB(A)										
Working Point	63	125	250	500	1000	2000	4000	8000	LwA	
1	Inlet	35	50	64	63	68	64	57	52	71
	Outlet	37	54	64	70	74	66	52	48	76
	Break-Out	22	37	48	48	57	54	45	39	60
2	Inlet	35	51	66	64	68	64	58	52	72
	Outlet	35	55	65	71	74	66	51	48	77
	Break-Out	22	38	51	49	58	54	46	39	61
3	Inlet	37	54	71	64	68	64	58	52	74
	Outlet	35	59	70	72	72	65	50	47	77
	Break-Out	24	42	56	49	58	54	46	39	61
4	Inlet	44	59	67	63	64	60	55	49	71
	Outlet	40	65	66	70	69	61	49	47	74
	Break-Out	32	46	52	48	53	51	43	36	58
5	Inlet	32	47	61	59	63	58	52	44	67
	Outlet	31	51	60	65	70	60	46	41	72
	Break-Out	21	34	42	45	52	48	40	32	55
6	Inlet	33	50	63	59	63	58	53	45	63
	Outlet	30	54	62	66	69	60	45	41	69
	Break-Out	21	36	44	45	52	48	41	33	51
7	Inlet	34	60	63	59	63	58	53	45	62
	Outlet	32	62	64	67	67	59	44	40	68
	Break-Out	23	46	45	45	52	48	40	33	49
8	Inlet	40	54	63	55	58	54	49	42	65
	Outlet	36	60	62	64	63	56	43	41	69
	Break-Out	28	40	44	41	47	44	37	29	51
9	Inlet	30	45	57	55	58	53	46	37	62
	Outlet	28	49	58	61	65	54	39	34	67
	Break-Out	22	33	40	42	47	42	34	26	50
10	Inlet	31	47	59	56	58	54	48	39	58
	Outlet	27	51	58	62	64	54	39	35	63
	Break-Out	23	35	42	42	47	43	35	28	50
11	Inlet	32	52	60	55	58	53	47	39	58
	Outlet	30	58	57	62	61	54	38	34	63
	Break-Out	24	40	43	42	47	43	35	28	49
12	Inlet	39	50	57	51	53	50	44	36	60
	Outlet	35	54	56	59	58	51	38	35	63
	Break-Out	31	38	40	37	42	39	31	24	47





envirovent®

Leaders in the manufacture of innovation
and sustainable ventilation

EnviroVent Ltd
Harrogate West Business Park
Unit 1 Bardner Bank
Killinghall, Harrogate
HG3 2SP

T / 01423 810 810
E / enquiries@envirovent.com
W / www.envirovent.com

Due to our policy of continuous innovation and improvement, EnviroVent reserves the right to alter products specification and appearance without notice.

E&OE | MKT ENV407 - V4 - 10/06/2025

Copyright © EnviroVent Ltd 2025



Follow us on
facebook



Follow us on
twitter



Watch us on
Youtube



Follow us on
Instagram



Follow us on
Pinterest



Find us on
LinkedIn

