

envirovent[®]

SLIMLINE 150 & 300

High Efficiency, Low Profile Heat Recovery Units



SLIMLINE 150 & 300

High Efficiency, Low Profile Heat Recovery Units



About

The Slimline 150 and 300 series are high-efficiency, low profile MVHR units to deliver exceptionally low energy consumption, low noise levels and innovative features.

- **Constant flow technology to deliver the required airflow at all times**
- **Exceptionally low noise levels**
- **Compact and low profile design for ease of installation in restricted spaces**
- **100% summer bypass as standard**
- **Frost protection (ISO)**
- **Ideal for a wide range of domestic and commercial applications**
- **High thermal efficiency**
- **Intelligent control module as standard**

2 year warranty

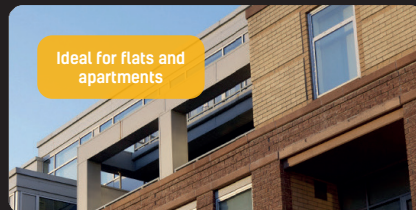
• Note: 'A+' rating only applicable to Slimline 300 with 2 or more sensors



The Slimline Range

The high-efficiency envirovent Slimline Range is ideal for ceiling mounted applications such as care homes and student accommodation to provide optimum ventilation. It can also be wall mounted using the supplied brackets. With a height of just 310mm on the Slimline 300 and 200mm for the Slimline 150, the low profile and compact design is perfect for installations where space is restricted. For renovation projects, the Slimline 150 offers an excellent choice for smaller dwellings and can be installed in areas such as above suspended ceilings in the central hallway of an apartment.

The Slimline 300 unit has a maximum airflow rate of 300 m³/h and a high thermal efficiency heat exchanger up to 90% to improve indoor air quality and deliver optimum comfort. The Slimline 150 similarly achieves a maximum airflow rate of 150 m³/h. A 'Plus' version is also available featuring additional connection options such as a CO₂ sensor.



Passive House Certified



The Slimline 150 & 300 products are Passive House certified and manufactured with the latest energy-saving technology. The Passive House concept is the only internationally recognised, performance-based energy standard in construction.

Constant Flow Control

The 'constant flow' technology ensures maximum efficiency and that the commissioned airflow rate is always delivered despite any resistance encountered in the ductwork or filters. The 'constant flow control' system also enables commissioning to be carried out much quicker and more easily, saving on installation costs.

Silent and Low Energy

There are a number of factors why the Slimline Range is so quiet. Engineered with aerodynamic fans to run at lower rates enables noise to be reduced and minimized. In addition, the unit has been designed with a larger heat exchanger, which minimises resistance to deliver exceptionally quiet running.

Slimline 150 unit shown with air distribution module. For further information on this accessory and to discuss your project call 01423 810 810



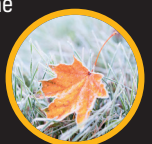
Control Options

The Slimline Range comes as standard with a control module that can be used to adjust the basic settings and air flow rates. The built-in timer function can be used to set the ventilation rate per day/week/weekend. Additionally, one or more 4-way switches, wireless RF controls or a humidity sensor may be installed.



Frost Protection

An intelligent frost protection system based on temperature and pressure prevents the heat exchanger from freezing when it is very cold outside. The Slimline 150 unit combines this with an integral pre-heater. An external pre-heater is also available for the Slimline 300.



Standard Bypass

The appliances come as standard with a 100% bypass for use when it is warm outside and heat recovery is not desired. The bypass is controlled fully automatically on the basis of the measured indoor and outdoor temperatures.

Technical Data

Ventilation capacity at 150 Pa (m ³ /h)	SLIMLINE150 - Max 150 SLIMLINE300 - Max 300
System sound emission dB(A)	SLIMLINE150 <40 at 75 m ³ /h & 100 Pa SLIMLINE300 <46 at 225 m ³ /h & 100 Pa
Rated power at 70% of the max appliance capacity (W)	SLIMLINE150 36 at 105 m ³ /h & 50 Pa SLIMLINE300 51 at 210 m ³ /h & 50 Pa
Dimensions Duct Connection (mm)	SLIMLINE150 - 4 x Ø125 SLIMLINE300 - 4 x Ø150/160
Air filtering	2 x ISO Coarse 60% filter (option: supply filter ePM1 50%)
Constant flow control	✓
Standard bypass	✓
Built in pre-heater	✓
Connections provisions for external pre-heater	✓
Connections provisions for humidity sensor	✓
Available as Plus version*	✓

SAP Appendix Q Performance

Kitchen + Additional Wet Rooms	Heat Recovery Efficiency (%)		Specific Fan Power (W/l/s)	
	SL150	SL300	SL150	SL300
+ 1	88	90	0.75	0.60
+ 2	85	90	0.86	0.62
+ 3	84	87	1.04	0.71
+ 4 (SL300 only)		86		0.83
+ 5 (SL300 only)		85		0.97
+ 6 (SL300 only)		84		1.12

Technical Specification

Product

The Slimline 150 and 300 shall be a constant flow, low profile whole house heat recovery ventilation systems.

Application Suitability

The high-efficiency and constant flow envirovent Slimline 150 is ideal for ceiling mounted or wall mounted applications such as apartments, care homes, offices and student accommodation to provide optimum ventilation. The Slimline 150 achieves a maximum airflow rate of 150 m³/h with thermal efficiency of up to 88%. The Slimline 300 unit has a maximum airflow rate of 300 m³/h and a high thermal efficiency heat exchanger up to 90% to improve indoor air quality and deliver optimum comfort. A 'Plus' version of both models shall also be available featuring additional connection options such as a CO₂ sensor.

Controls

The unit shall come as standard with the intelligent control module, that can be used to adjust the settings and airflow rates. The built-in timer function can be

used to set the ventilation rate per day/week/weekend. Additionally, one or more 4-way switches, wireless RF controls or a humidity sensor may be installed.

Motor

The unit shall incorporate Ultra Low Watt EC motor technology to provide the lowest possible SFP and unit running costs with sealed for life ball bearings and designed to operate continuously at a pre-set 'background' rate.

Fan

EC motors shall power the centrifugal forward curved fan impellers.

Heat Exchange Cell

The heat exchange cell shall be a high efficiency counter flow cell.

Summer Bypass & Frost Protection

The Slimline 150 unit shall incorporate a 100% mechanical summer bypass and preheater as standard. The bypass contributes to an improved comfort level in summer and is controlled automatically by measuring indoor and outdoor temperatures. The intelligent frost protection with preheater guarantees the high efficiency, even at extremely low temperatures. This energy-efficient frost protection helps to achieve significant energy savings per year.

Constant Flow Control

The 'constant flow' technology ensures maximum efficiency and that the commissioned airflow rate is always delivered despite any resistance encountered in the ductwork or filters. The 'constant flow control' system also enables commissioning to be carried out much quicker and more easily, saving on installation costs.

Filtration

The unit shall incorporate 2 x ISO Coarse 60% filters with the option of an ePM1 50% supply filter.

Servicing / Maintenance

envirovent recommend that units should be serviced annually to maintain optimal performance and that filters should be checked regularly and cleaned as and when required.

Warranty

The envirovent Slimline Range are covered by a parts only 2-year warranty. Please note that conditions and exclusions apply to the warranty which can be found at www.envirovent.com/warranty

Installation

Full installation guide shall be enclosed with all products; or sent separately in advance if required. The unit shall be capable of being wall or ceiling mounted with the brackets supplied. The unit shall be suitable for installation in an accessible ceiling void or wall mounted with easy commissioning features. The Slimline 150 shall incorporate Ø125 mm extract and supply spigots.

Accreditation

SAP PCDB Listed

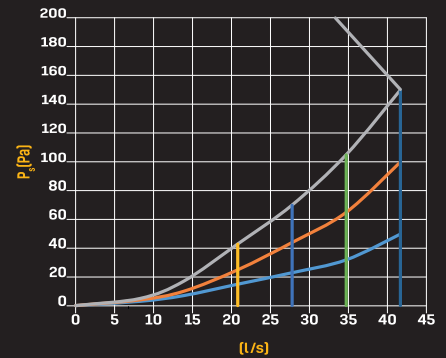
Conforms to the requirements of the UK Building Regulations and the Technical Standards for Ventilation. Conforms to requirements of the EC council directives relating to Electromagnetic Compatibility and Electrical Safety (LDV and EMC)

CE Marked.

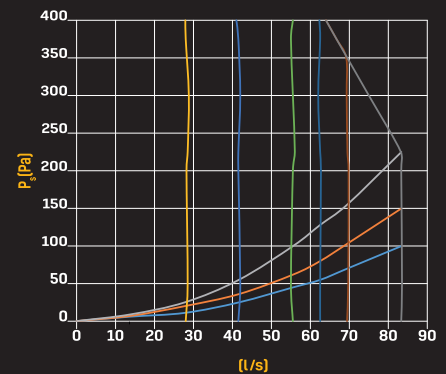
Options & Ancillaries

DESCRIPTION	CODE(S)
4 way remote control switch and receiver	SWHBKRFSET-4
4 way remote control switch	SWHBKRF-4
Humidity sensor, duct mounted	SENSORBK-H
CO ₂ sensor (PLUS versions only)	SENSORBK-CO2
2 x ISO Coarse 60% filters	FILTER-SL150-G4 FILTER-SL300-G4
ISO Coarse 60%/ePM1 50% filters	FILTER-SL150-G4/F7 FILTER-SL300-G4/F7
Low profile distribution box	SL150-DBOX
Low profile distribution box	SL300-DBOX

Performance Curves Slimline 150

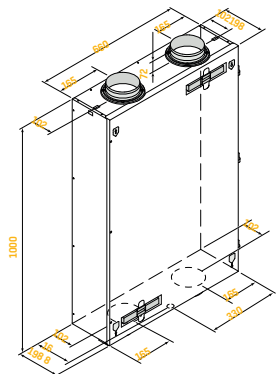


Slimline 300

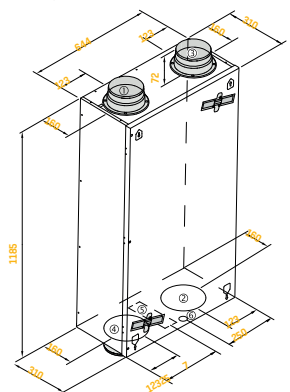


Dimensions (mm)

Slimline 150



Slimline 300



envirovent[®]

because your air matters

envirovent Ltd
Harrogate West Business Park
Unit 1 Bardner Bank
Killinghall, Harrogate
HG3 2SP

T / 01423 810 810
E / enquiries@envirovent.com
W / www.envirovent.com

Due to our policy of continuous innovation and improvement, envirovent reserves the right to alter products specification and appearance without notice.

E&OE | MKT ENV1243 - V5 - 20.04.2026

Copyright © envirovent Ltd 2026



Follow us on
facebook



Follow us on
Instagram



Watch us on
Youtube



Find us on
LinkedIn

