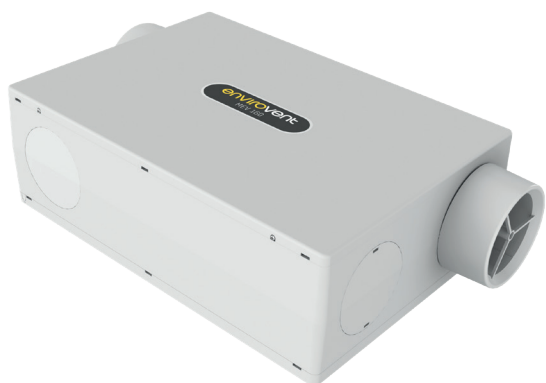


# TECHNICAL DATA SHEET

## MEV 160 | Mechanical Extract Ventilation Unit



### KEY FEATURES

- ✓ Low Specific Fan Power (SFP) of 0.19 W/l/s
- ✓ Low profile at a height of just 161mm
- ✓ Versatile - Can be installed on a wall, ceiling, or floor
- ✓ Intellitrac® humidity tracking
- ✓ 6 spigot points (3x Ø125mm spigots supplied)
- ✓ Fast Track semi-rigid duct option
- ✓ High efficiency DC motor
- ✓ SAP PCDB Listed

### PRODUCT

Innovative and low energy unit which has been designed to provide continuous mechanical extract ventilation to allow you to meet current building regulations.

### APPLICATIONS

Suitable for use in houses and apartments with kitchen plus up to 6 wet rooms. The unit can be installed horizontally on floors and ceilings or vertically on walls. The six twist, fix and release entry points can be easily swapped if required.

### INSTALLATION

A full installation guide is enclosed with all products or is available for download on the EnviroVent website. The unit is pre-wired with a standard length of cable for connection to the 230V mains supply and includes a switch live connection. The unit can be installed horizontally on floors and ceilings or vertically on walls and is provided with an Ø125mm exhaust outlet and three Ø125mm spigot inlets (as standard) connecting into six possible locations on the unit. Optional versions of the product are available for connection to the Fast Track ducting system, this is a semi-rigid ducting solution for fast airtight installation. Additional spigot inlets can be purchased separately.

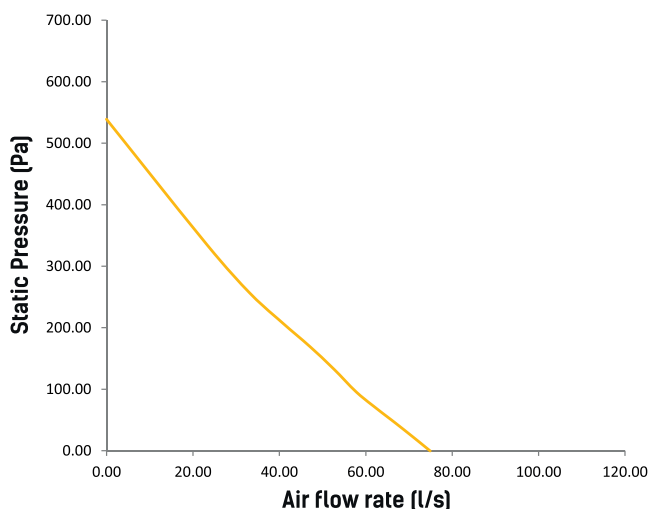
### CONTROLS

The unit shall be commissionable by the installer in accordance with Approved Document F of the Building Regulations for England and Wales. They shall be fitted with the Intellitrac® humidity tracking system, which regulates the fan speed when the RH level varies above/below the set point. There is a choice of either wireless or hardwired boost switching.

#### Optional Wireless Remote Control versions - W:

These units are supplied with a wireless remote control to boost the airflow for 20 minutes (default time), before returning to the commissioned trickle speed setting. 0-10V variable control input is available on - W units for use with AirSens® or other 0-10V devices.

### PERFORMANCE CURVE



### PRODUCT CODES

Description	Code(s)
MEV 160 with Intellitrac® humidity tracking and wired boost switch	MEV160
MEV 160 with Intellitrac® humidity tracking and wired boost switch. Fast Track	MEV160FT
MEV 160 with Intellitrac® humidity tracking and Wireless Remote Control	MEV160-W
MEV 160 with Intellitrac® humidity tracking and Wireless Remote Control. Fast Track	MEV160FT-W

3 Spigots are supplied as standard. For additional spigots, please refer to Page 2 for order codes.

# TECHNICAL DATA SHEET

## MEV 160 | Mechanical Extract Ventilation Unit

### CONSTRUCTION

Durable ABS plastic body.

### FAN

MEV 160 - Incorporates a Ø160mm backward curved centrifugal fan that uses a highly efficient DC motor which is designed to operate continuously at a pre-set rate.

### SERVICING / MAINTENANCE

EnviroVent recommend that units should be serviced annually to maintain optimal performance and if cone filters are fitted in the ducts these should be checked regularly and cleaned as and when required.

### WARRANTY

The EnviroVent MEV160 and MEV300 units are covered by a parts only 2-year warranty. Please note that conditions and exclusions apply to the warranty which can be found at [www.envirovent.com/warranty](http://www.envirovent.com/warranty)

### ACCREDITATIONS

CE and UKCA Marked.

SAP NCM PCDB Listed.

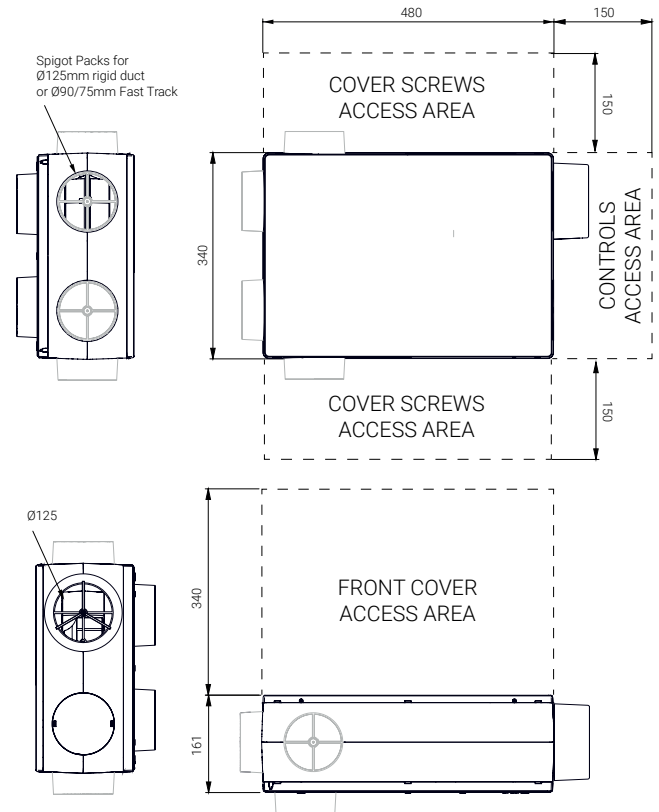
Manufactured under BS EN ISO 9001 and BS EN ISO 14001.

### SPARES & ANCILLARIES

Description	Code(s)
125mm white extract valve	1DIFEXTRACT125WH
150mm white extract valve	1DIFEXTRACT150WH
Spare wireless remote control	SWH-W-MEV
125mm rigid duct spigot x1 (more than 3 runs)	PACKRIGID125
Fast Track/Plus additional 100-90mm Conector (more than 3 runs)	FT-CON100-90-MEV
AirSens® CO2	AIR-CO2
AirSens® VOC	AIR-VOC
AirSens® RH	AIR-RH
AirSens® CO2 - Wireless	AIR-CO2-RF
AirSens® VOC - Wireless	AIR-VOC-RF
AirSens® RH - Wireless	AIR-RH-RF
AirSens® Wireless Receiver	AIR-REC-RF

### SIZE (MM)

Spigot for 125mm rigid or Fast Track Semi Rigid ducting, dependant on unit variant



A full Consultant Specification can be sent on request.

# TECHNICAL DATA SHEET

## MEV 160 | Mechanical Extract Ventilation Unit

### TECHNICAL SPECIFICATIONS

<b>Max Air Flow Rate</b>	75l/s (270m <sup>3</sup> /h)
<b>Fan Type</b>	175mm BACKWARD CURVED
<b>Specific Fan Power</b>	0.19 W/l/s (Measured at K+1)
<b>Electrical Supply</b>	230V Single Phase 50Hz
<b>Max Power Consumption</b>	43.5W
<b>Ingress Protection Class</b>	IPX2
<b>Spigot Size</b>	125mm / 90mm fast track
<b>Dimensions</b>	480mm x 340mm x 161mm
<b>Weight</b>	5kg
<b>ErP Rating</b>	B
<b>Sound Power Level</b>	-

### PERFORMANCE & SAP RESULTS

Exhaust Terminal Configuration	Fan Speed Setting	Specific Fan Power (W/l/s)	Total Flow Rate (l/s)
Kitchen + 1 wet room	100% Var	0.21	21
Kitchen + 2 wet room	100% Var	0.26	29
Kitchen + 3 wet room	100% Var	0.33	37
Kitchen + 4 wet room	100% Var	0.39	45
Kitchen + 5 wet room	100% Var	0.54	53

MEV160FT with 75mm Fast Track Ducting.

Exhaust Terminal Configuration	Fan Speed Setting	Specific Fan Power (W/l/s)	Total Flow Rate (l/s)
Kitchen + 1 wet room	100% Var	0.18	21
Kitchen + 2 wet room	100% Var	0.22	29
Kitchen + 3 wet room	100% Var	0.28	37
Kitchen + 4 wet room	100% Var	0.35	45
Kitchen + 5 wet room	100% Var	0.52	53

MEV160FT with 90mm Fast Track Ducting.

Exhaust Terminal Configuration	Specific Fan Power (W/l/s)	Total Flow Rate (l/s)
Kitchen + 1 wet room	0.19	21
Kitchen + 2 wet room	0.23	29
Kitchen + 3 wet room	0.27	37
Kitchen + 4 wet room	0.35	45
Kitchen + 5 wet room	0.44	53
Kitchen + 6 wet room	0.59	61

SAP results shown with 125mm connectors. See PCDB for full details.