

CAB TWIN ECOWATT N

Energy Efficient Twin Acoustic Cabinet Fans



About

The CAB TWIN ECOWATT N range comprises 7 sizes of centrifugal twin fans with acoustically-lined cabinets; each consisting of two direct driven centrifugal fans which work independently for run and standby plus duty-share function. The low noise backward-curved fans are fitted with maintenance-free electronically commutated or EC motors. Recirculation of air is prevented by an integral back-draught shutter. Impellers are designed for high efficiency and are balanced to ISO- 1940.

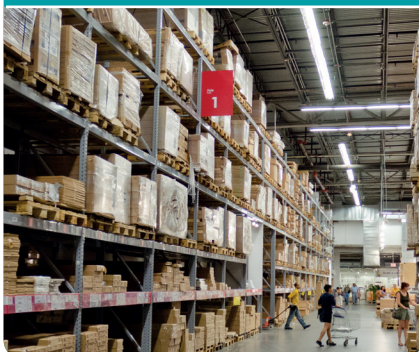
The cabinets are welded and are lined with 25mm of flame-retardant V0 rated acoustic insulation lining. As standard, they are supplied suitable for mounting indoors; however weatherproof covers for outdoor mounting are available as an accessory. The cabinets are provided with 4 corner fixing holes for ease of mounting horizontally, with access either from above or below the unit via the panel secured with screws.

Motors

Motors are suitable for continuous operation at up to +40°C ambient temperature.

Electrical Supply

The units are fitted with an IP54 rated terminal box positioned on the inlet face of the cabinet.



New Improved Design

New and improved design for better SFPs



Backward Curved Impeller

Backward curved impeller With energy-efficient EC motor



IP54 Rated

Integrated IP54 control unit & backdraught shutter



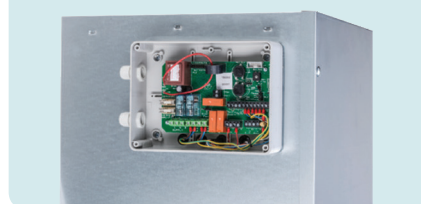
Easy Mounting

Very easy to mount with pre drilled screw holes



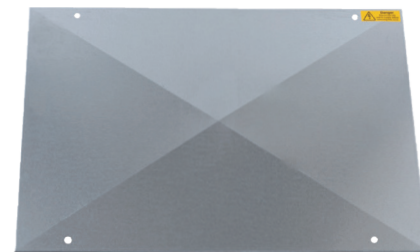
Integrated Control Unit

Integrated IP54 control unit.



Outdoor Cover

Outdoor cover available as an accessory



Mounting Accessories

| PRODUCT | CODE(S) |
|---|-------------------------------|
|  | SOUND ATTENUATORS |
| | IN-SA125X900 |
| | IN-SA150X900 |
| | IN-SA200X900 |
| | IN-SA250X900 |
| | IN-SA300X900 |
| | IN-SA400X900 |
|  | CIRCULAR FLEXIBLE CONNECTIONS |
| | EV-CIRCTR-140 |
| | EV-CIRCTR-160 |
| | EV-CIRCTR-200 |
| | EV-CIRCTR-250 |
| | EV-CIRCTR-315 |
| | EV-CIRCTR-355 |
| | EV-CIRCTR-400 |
|  | ANTI-VIBRATION MOUNTS |
| | EV-AVMT (4 supplied in bag) |
|  | DISCHARGE PROTECTION GUARDS |
| | EV-DPG-125 |
| | EV-DPG-160 |
| | EV-DPG-250 |
|  | FILTRATION BOXES |
| | EV-FILTB-125 |
| | EV-FILTB-160 |
| | EV-FILTB-200 |
| | EV-FILTB-250 |
| | EV-FILTB-315 |
| | EV-FILTB-355 |
| | EV-FILTB-400 |



Our installation team are fully certified to current IEE wiring regulations, NICEIC and HVCA standards, giving you peace of mind and confidence that the highest level of quality will be achieved.



EnviroVent are the only UK ventilation manufacturer to offer a fully integrated, in-house planning and fitting service, with fully qualified and approved NICEIC engineers.



Did you know?

Indoor air pollution could be up to three times more noxious than outdoors, according to research from the University of Sheffield.