

TECHNICAL SPECIFICATION CAB TWIN ECOWATT N



Product

The CAB TWIN ECOWATT N range comprises 7 sizes of centrifugal twin fans with acoustically-lined cabinets; each consisting of two direct-driven centrifugal fans which work independently for run and standby plus duty-share function. The low-noise backward-curved fans are fitted with maintenance-free electronically-commutated or EC motors. Recirculation of air is prevented by an integral back-draught shutter. Impellers are designed for high efficiency and are balanced to ISO-1940.

The cabinets are welded and are lined with 25mm of flame-retardant V0 rated acoustic insulation lining. As standard, they are supplied suitable for mounting indoors; however weatherproof covers for outdoor mounting are available as an accessory. The cabinets are provided with 4 corner fixing holes for ease of mounting horizontally, with access either from above or below the unit via the panel secured with screws. Motors are suitable for continuous operation at up to +40°C ambient temperature.

The units are fitted with an IP54 rated ACODS control unit providing automated Run and Standby functions by low current sensing. The integrated control unit also allows for trickle and boost speeds defined upon installation or remotely adjustable via accessories and in addition provides duty-sharing adjustable from 3-24 hours (3 hour steps) and BMS output/remote fault indication. 1 or 2 speeds settable during installation to provide either A) a pre-defined duty or b) a trickle and boost ventilation rate via external switch or sensor.

Application

Toilet extract ventilation in offices, hospitals, schools, retail outlets plus other areas where run and standby operation is required.

EC TWIN Fan Units:

- Low-energy EC motor with efficient backward curved impeller
- Wide range of performances up to 2398 m³/hr [0.666 m³/s]
- High pressure capabilities, up to 400Pa
- Top or bottom access
- Acoustically-lined cabinets
- 100% Run & Standby

Integrated Control Unit:

- Duty sharing auto-changeover control unit built-in
- 0-10V Speed controllable
- BMS compatible
- Adjustable Trickle & Boost speed settings [switch via PIR, RH% or other external switch]



New and improved design for better SFPs



Backward curved impeller With energy-efficient EC motor



Integrated IP54 control unit & back-draught shutter



Easy to Mount



Integrated control unit

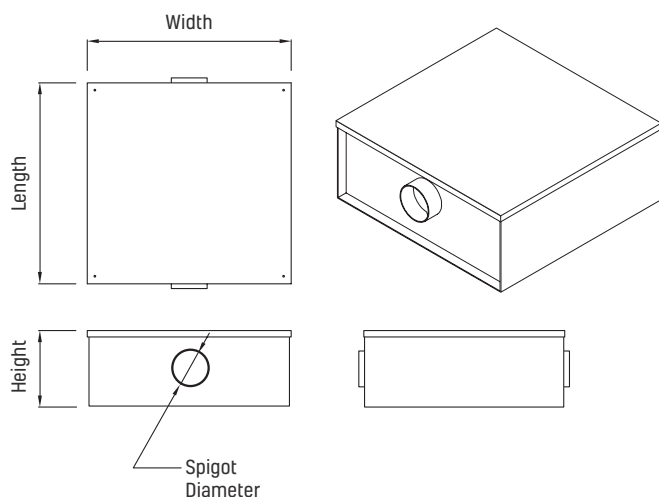


Outdoor cover available as an accessory

TECHNICAL SPECIFICATION

CAB TWIN ECOWATT N

Size



Model	Width (mm)	Length (mm)	Height (mm)	Spigot Ø (mm)	Spigot Length (mm)
CAB TWIN-125 ECOWATT N	650	450	315	125	55
CAB TWIN-150 ECOWATT N	650	450	31	150	55
CAB TWIN-200 ECOWATT N	810	485	374	200	55
CAB TWIN-250 ECOWATT N	810	548	401	250	55
CAB TWIN-315 ECOWATT N	1048	685	454	315	55
CAB TWIN-355 ECOWATT N	1130	730	494	355	55
CAB TWIN-400 ECOWATT N	1130	730	494	400	55

Technical Characteristics

Model	Maximum absorbed power (W)	Maximum absorbed current (A)	Maximum airflow (m³/h)	Sound Pressure Level dB(A) at 3m			Weight (kg)
				Outlet	Inlet	Radiated	
CAB TWIN-125 ECOWATT N	133	0.9	515	36	43	31	14
CAB TWIN-150 ECOWATT N	133	0.9	558	41	44	34	23
CAB TWIN-200 ECOWATT N	160	1.15	1044	42	47	33	28
CAB TWIN-250 ECOWATT N	207	1.29	1199	46	52	36	44
CAB TWIN-315 ECOWATT N	264	1.16	1865	48	51	46	44
CAB TWIN-355 ECOWATT N	229	0.95	2351	48	52	43	81
CAB TWIN-400 ECOWATT N	229	0.95	2398	48	49	42	91

Performance Data [Airflow m³/s @ static pressure Pa]

Model	0	25	50	75	100	150	200	250	300	350	400	450	500
CAB TWIN-125 ECOWATT N	0.143	0.139	0.134	0.129	0.124	0.117	0.110	0.099	0.090	0.081	0.070	0.060	0.049
CAB TWIN-150 ECOWATT N	0.155	0.151	0.147	0.142	0.138	0.126	0.120	0.106	0.095	0.086	-	-	-
CAB TWIN-200 ECOWATT N	0.290	0.282	0.273	0.264	0.256	0.219	0.204	0.185	0.158	0.140	0.120	0.092	0.060
CAB TWIN-250 ECOWATT N	0.333	0.326	0.317	0.306	0.295	0.274	0.256	0.235	0.197	0.175	0.175	0.158	0.136
CAB TWIN-315 ECOWATT N	0.518	0.506	0.493	0.476	0.457	0.401	0.357	0.306	0.250	0.160	0.109	-	-
CAB TWIN-355 ECOWATT N	0.653	0.625	0.597	0.597	0.536	0.472	0.411	0.347	0.250	-	-	-	-
CAB TWIN-400 ECOWATT N	0.666	0.631	0.611	0.589	0.542	0.486	0.431	0.351	0.250	-	-	-	-