

# FAST TRACK - OUR COMPLETE DUCTING SOLUTION

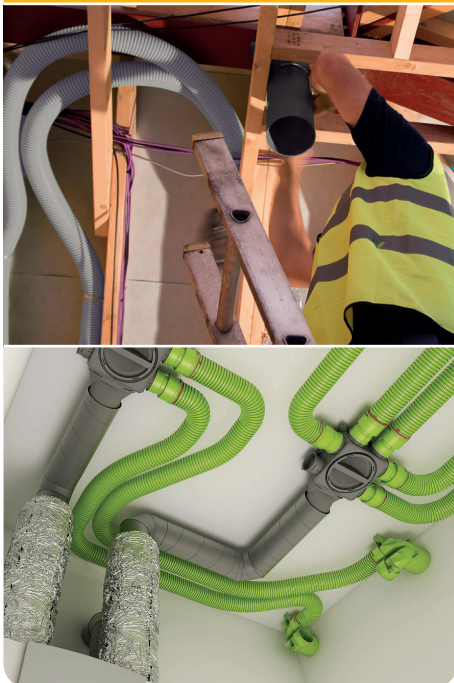
## Don't blame the installers, just make it easier for them!

EnviroVent believes that quality ductwork should not be dependent upon highly qualified installers and regulatory measures.

Therefore, we introduced ventilation ductwork, which can be installed very easily and quickly, even by less qualified and experienced installers and is airtight by definition.

### Ductwork is the Achilles heel of mechanical ventilation units:

- ❖ Poorly designed ductwork results in high pressure drops.
- ❖ Unsealed connections result in high air leakage.
- ❖ Both result in higher energy consumption and noise hindrance, as the ventilation units have to work harder to ventilate 'right' (although some installers don't seal connections, they should).



## Using non-hardening sealant, mechanical fixings & ideally tape to seal connections, can be:

- ❌ Messy and wasteful
- ❌ Takes a lot of time to do it properly, i.e. costly
- ❌ Not only tape - two forms of mechanical fixing. Jubilee clips and rigid connectors for flex, plus a low modulus non-hardening sealant is also required
- ❌ Makes it difficult to achieve a high and consistent quality airtight seal



## Airtight mechanical connections are:

- ✅ Clean and there's no waste
- ✅ Extremely easy and quick to install - it only takes a couple of seconds
- ✅ Highest and most consistent quality airtight seal possible
- ✅ Sustainable airtight connection

## APPROVED DOCUMENT F VOLUME 1, 2021 EDITION

**1.79** Ductwork installations should be designed and installed to minimise the overall pressure losses within the system by taking all of the following steps.

- Minimising the overall length of duct.
- Minimising the number of bends required.
- Installing appropriately sized ducts for the air flow rate.

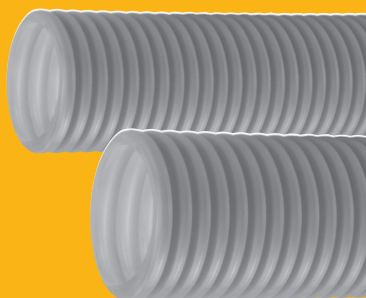
**1.81** Duct connections should be both mechanically secured and adequately sealed to prevent leaks. Rigid connectors and jubilee clips should be used for flexible ducting to ensure a good seal.

The install should comply with all the relevant guidance in local regulations and should be installed by a competent person.

# FAST TRACK DUCTING RANGES

## FAST TRACK - SEMI RIGID DUCTING

FIXING: CLICK & CONNECT



- › Click and connect with antibacterial and antistatic lining
- › Minimal energy consumption and noise hindrance
- › 75mm and 90mm circular ducting options
- › Two and three-way valve adaptors
- › Acoustic damper option
- › Airtight connections
- › Different distribution box sizes with 8 (90mm) and 10 (75mm) spigots
- › Ducting available in 50m rolls (grey)
- › Stepped adaptors for connections to different ducting sizes
- › Reduced installation time - no need for screws and glue
- › Easy installation and removal for cleaning of ducts

## FAST TRACK PLUS - SEMI RIGID DUCTING

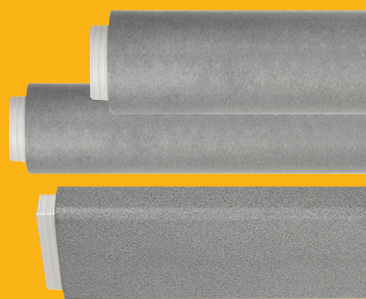
FIXING: CLICK & CONNECT

- › Different distribution boxes available for greater flexibility
- › Ducting available in 50m (circular) and 20/30m (oval) rolls
- › Stepped adaptors for connections to different ducting sizes
- › Reduced installation time - no need for screws and glue
- › Easy installation and removal for cleaning of ducts
- › Click and connect with antibacterial and antistatic lining
- › Minimal energy consumption and noise hindrance
- › 75mm and 90mm circular ducting options
- › 102 x 50mm and 136 x 60mm oval ducting options
- › Airtight connections
- › Floor grilles for alternative installation options



## FAST TRACK THERMAL - THERMAL DUCTING

FIXING: CLICK & LOCK



- › Click and lock patented self-sealing connections
- › 125mm and 160mm circular ducting options
- › 204 x 60mm rectangular ducting option
- › Airtight connections
- › Ducting is available in 1m or 2m lengths, easily cut to size
- › High thermal properties, minimising heat loss
- › Connectors, bends, and t-pieces available
- › No need for screws and glue
- › Easy installation and removal for cleaning of ducts

## FAST TRACK RIGID - SELF-SEAL COUPLERS

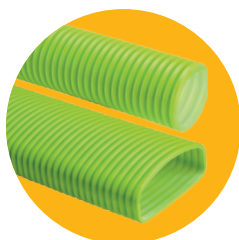
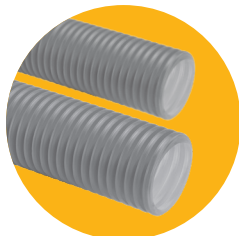
FIXING: SELF-SEAL

- › 204 x 60mm rectangular option
- › Reduces the installation time
- › No need for screws and glue
- › Easy removal for cleaning of ducts
- › Self-seal couplers
- › Push fit airtight connections
- › For use with rigid 'trunk and branch' PVC ducting
- › 125mm circular option



## The Complete Semi-Rigid Solution

The Fast Track Range is a comprehensive portfolio of ductwork and parts to make complete, energy-efficient and easy to install ventilation systems. The semi-rigid ductwork is available in various circular and semi-circular dimensions.



### Air Distribution Boxes with Semi-Rigid Ducting

- Plastic = lightweight, risk-free installation
- Airtightness Class C (EN 12237)
- Circular ducting: 75mm and 90mm
- Oval ducting: 102mm x 50mm and 132mm x 60mm (Fast Track Plus only)

### Stepped mass flow ducting adaptors:

- Easy post-installation access to restrictors and for maintenance
- Ø125mm, Ø160mm & Ø200mm (Fast Track only)
- Ø125mm, Ø150mm, Ø160mm and Ø180mm (Fast Track Plus only)

#### FAST TRACK



125/160/200mm stepped adaptor

#### FAST TRACK PLUS



125/150/160/180mm stepped adaptor



125/160mm side adaptor

For more information about our range of ducting and ancillaries

**CALL US ON 01423 810 810**

## Distribution Boxes

### FAST TRACK

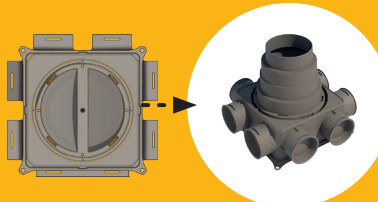
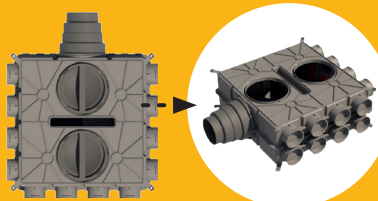
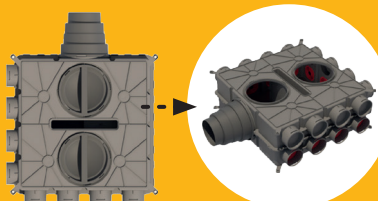
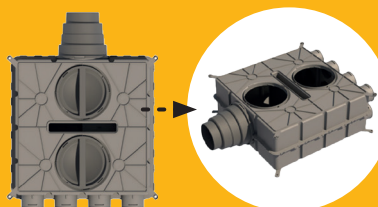


75mm 10 spigot distribution box



90mm 8 spigot distribution box

### FAST TRACK PLUS



## Configuration Example & Options

### FAST TRACK ONLY



Vertical stack configuration



75mm three-way valve adaptor



90mm two-way valve adaptor



125mm acoustic damper



End cap



Connector



Horizontal stacking couplers



Vertical stacking couplers