

envirovent®



Infinity Extract Fan

Designed to Perform. Built to Last.

WC, Bathroom & Kitchen Fan



infinity



EnviroVent has been continually refining Filterless extract technology since it invented it 10 years ago, which has reduced social housing landlord's extractor fan maintenance costs by tens of millions of pounds. The Infinity model has been specifically designed and future-proofed to meet the requirements for social housing newbuild homes as whole-dwelling ventilation rates increase.

Guaranteed for longer than any other fan

The Infinity is designed and manufactured in the UK for the rigours of Social Housing where there is a need to remove moisture and improve indoor air quality for all in the dwelling over the long term with minimal maintenance.

The Lifetime Range® products have been designed for longevity and engineered with sustainable components to substantially reduce maintenance and life-cycle costs, ensuring minimum energy consumption. Guaranteed to last longer than any other fan with an incredible 7 year no quibble, maintenance-free warranty, the Infinity offers the lowest life-cycle costs on the market.



no quibble,
7 year warranty.
no strings attached.

the facts

Choose the EnviroVent Infinity and you only need to maintain it every 7 years

Over the years this technology has been proven to save Social Landlords tens of millions of pounds in fan maintenance costs

No more returning to properties every year to clean and repair clogged fans and dirty filters

the result



Features & Benefits



Just some of the reasons why you should choose the Infinity



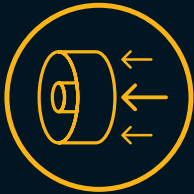
Patented cyclone separation technology

For maximum performance to control moisture and humidity



Pullcord as standard

Can be switched to boost mode with the use of the pullcord for odour control



Removable impeller. No filter.

For hassle-free, rapid and safe cleaning



Whisper quiet running

Eliminates one of the biggest complaints about noisy fans



Exchangeable cartridge system

Provides the lowest ever lifecycle costs to save housing providers millions of pounds in maintenance and replacement costs: should never end up on a landfill site



Future-Proofed to Comply

Meets the airflow requirements of a typical dwelling



Ultra low energy consumption

Long trouble free life, less costs



Manufactured in the UK

Supporting our local economy, lowering the carbon footprint



Intellitrac® humidity tracking control

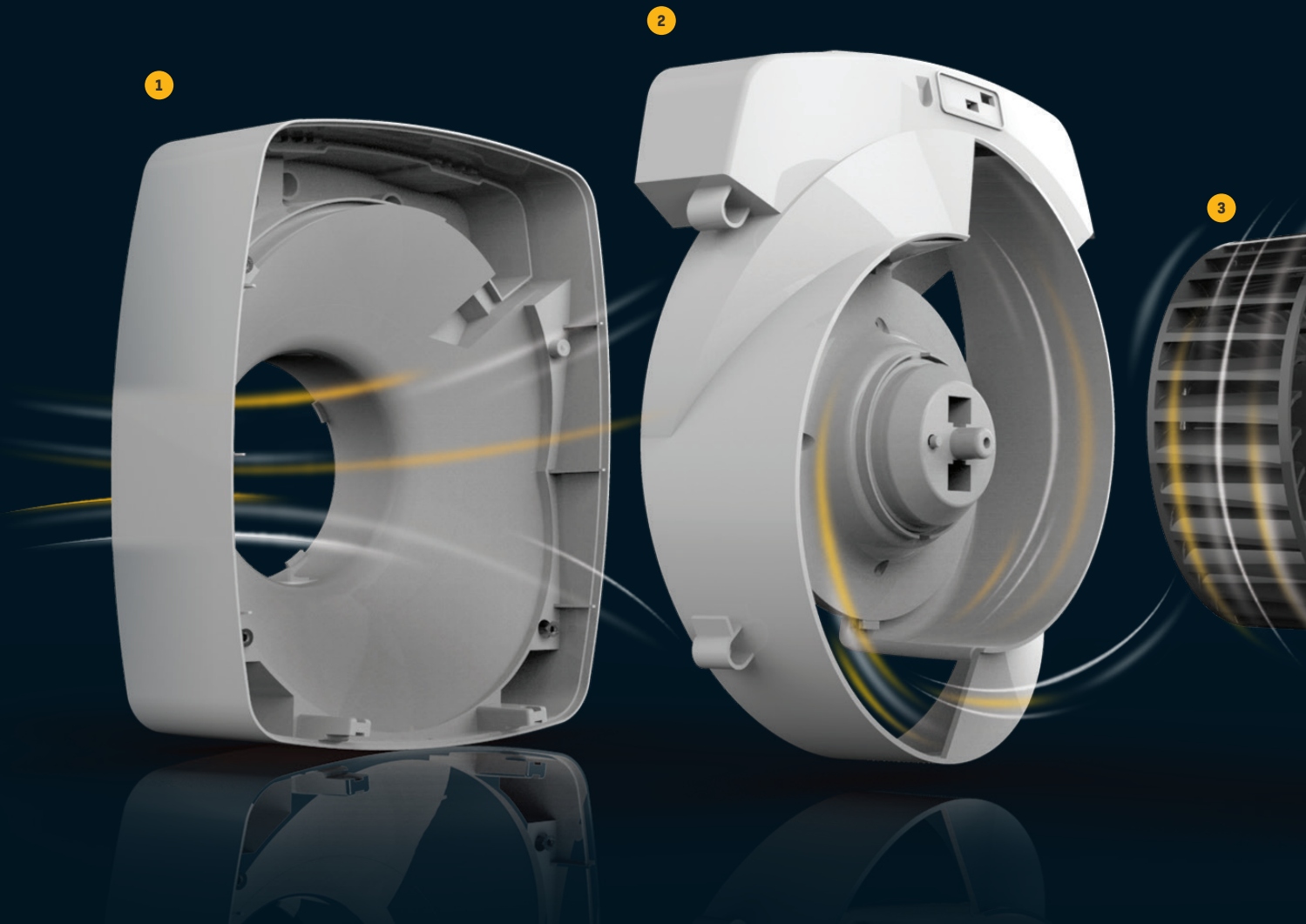
No need for user intervention, the Filterless Infinity reacts quietly to reduce high humidity before condensation can start to occur



7 year renewable warranty

Part of our lifetime range®. High quality for peace of mind, saving time, money and hassle. Reducing the impact on landfill sites too

Cyclone Separation Technology



7

Precision engineered, allowing us to offer a 7 year warranty

We are absolutely confident that we can offer a 7 year no quibble maintenance-free warranty because we have been running an accelerated life test programme for nearly 10 years on the Infinity's predecessor - the original EnviroVent Filterless Fan - without a single breakdown.

Our R&D teams are continually testing and improving this technology to make it perform even better for longer. Following extensive testing and research we have further engineered the airflow of the Infinity with exact precision to achieve the optimal efficiency out of the highest quality bearings. The stylish new front grille allows the air to pass through with the least possible resistance to achieve the quietest performance.

accept no imitations.

The patented technology behind the Infinity

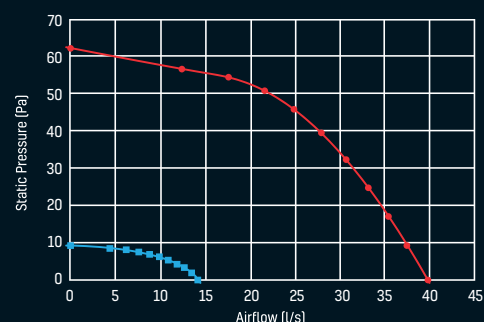
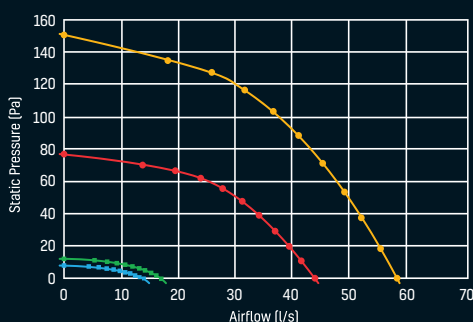
EnviroVent's Filterless Extract Fans are the only fans with patented Cyclone Separation Technology (No. 0402041.8). This ensures that all particles, humidity and dust in the air are drawn into the fan and extracted outside the property, without the need for filters that can become clogged. This enables the fan to deliver the maximum of performance to control moisture and humidity using the lowest energy consumption.

Simply put, if a fan hasn't got cyclone separation then it isn't truly filterless...

- 1 Air is expelled through robust rear carcass
- 2 Air is thrown outwards through a dual powered expansion chamber and allowed to expand out to atmosphere
- 3 Easy clean impeller
- 4 Air is drawn through the helical front grille

Future Proofed to Comply

There is nothing more frustrating than finding out that a fan that does not comply to the airflow rates when installed. With whole-building ventilation rates expected to increase, the Infinity Fan is capable of delivering 9l/s or 11 l/s (selectable on trickle for bathroom or kitchen) to achieve the whole dwelling ventilation rate.*



Part of the Lifetime Range®



What does that mean for the Infinity Fan?

1 The product is guaranteed for 7 years. There is no need to register the product or restrict the guarantee to just the motor	2 When you specify a Infinity Fan, it is our responsibility for the next 7 years	3 We wipe out any disrepair problems for 7 years; if the product fails, we fix it
4 Costly time consuming call outs and returning product to suppliers is eliminated. It's our problem	5 When the guarantee period expires or when the product finally fails, we take it back to our Harrogate factory, refurbish it and reinstate the warranty at a fraction of the cost of a new product	6 This ensures no product ever ends up on a landfill site, that's why it is called our Lifetime Range®

Installation-Friendly

The Infinity has also been designed for the easiest installation ever:

IP66 rated cable entry sockets accessible through all points of the compass	No complicated selection switches for commissioning
An IPX4 sealed chamber housing all electronics	The SELV version is supplied with a power supply unit incorporating a fixed fuse spur

One Fan Fits All

The Infinity is ideal for WC, bathroom, kitchen and utility room installations, delivering high performance extract ventilation to meet the building regulations and beyond.

From simple through the wall installations, to in-line, window and ceiling installations, the Infinity fan fits all with the use of easy to install accessory kits.

For extra safety in bathrooms, a low voltage version is available.



Intellitrac® vapour tracking

Running continuously on trickle, the Infinity ensures that condensation and high humidity levels are kept at bay. No user intervention is required as the intelligent vapour tracking controls constantly monitor the average humidity.



As this rises and falls, the motor speed rises and falls in direct correlation. This controls condensation both quietly and efficiently, eliminating the problem of noisy extract fans and reducing the periods of time when the fan operates on maximum speed, saving energy.



Usage Meter as Standard

This is built into the central cartridge as standard to enable landlords to monitor operational life.



**Always refer to the installation instructions before carrying out maintenance.

Filter-free and fuss-free cleaning

4 step cleaning couldn't be simpler or safer:

There is a small magnet which deactivates the fan as soon as the front cover is removed. Once the cover is replaced the fan will continue to run as normal.

1 Remove the front cover



2 Clip out the impeller and wipe the fan clean



3 Wash the impeller in a sink**



4 Replace impeller and front cover

Airflow Performance* - 230V

Settings	Power [W]	Duty [l/s]
Bathroom Trickle	2.6	14
Bathroom Boost	13.8	44
Kitchen Trickle	3.1	17
Kitchen Boost	30.1	59

Airflow Performance* - SELV

Settings	Power [W]	Duty [l/s]
Bathroom Trickle	1.2	14
Bathroom Boost	8.7	40

*Performance under free air condition (0Pa)

Running Costs

Bathroom & kitchen

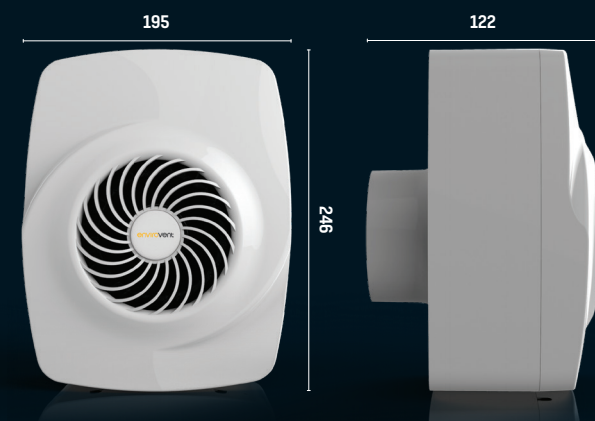
Please scan our QR code to see the **annual running costs** of this product.



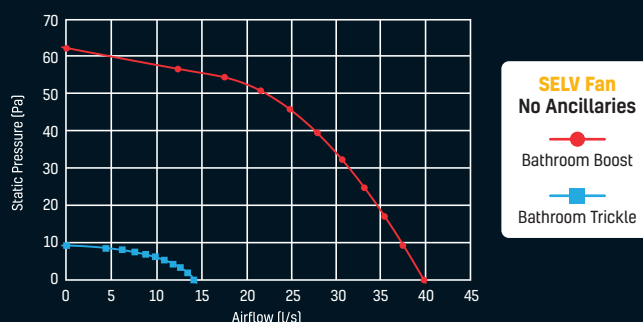
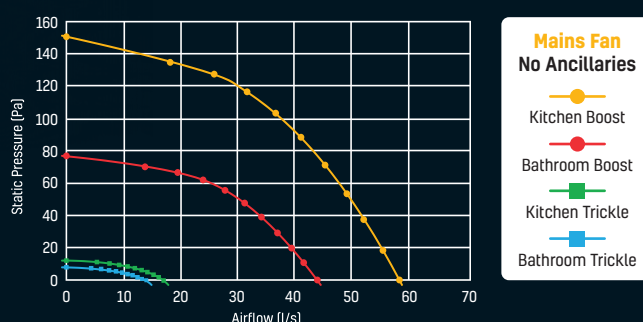
Or visit:
envirovent.com/annual-running-costs

Technical data

Dimensions (mm)



Performance Curve



Accessories

The Infinity is available in 230V or SELV format and can be wall, window, ceiling, in-line or panel mounted with the use of the below kits. Please contact us to obtain your unique customer order code.

MODELS	DESCRIPTION
INF-230V	230V version with intellitrac® & pullcord
INF-SELV	SELV version with intellitrac® & wireless boost switch
INF-230V-RC	230V version with Intellitrac® & remote switch wire for ceiling mounting
INF-SELV-RC	SELV version with Intellitrac® & remote switch wire for ceiling mounting
INF-230V-WL	230V version with Intellitrac® & wireless controller
INF-IL-W	230V inline version with Intellitrac® & wireless controller

envirovent®

Leaders in the manufacture of innovation
and sustainable ventilation

EnviroVent Ltd
Harrogate West Business Park
Unit 1 Bardner Bank
Killinghall, Harrogate
HG3 2SP

T / 01423 810 810
E / enquiries@envirovent.com
W / www.envirovent.com

Due to our policy of continuous innovation and improvement, EnviroVent reserves the right to alter products specification and appearance without notice.

E&OE | MKT ENV605 - V2 - 19/09/2023

Copyright © EnviroVent Ltd 2023



Follow us on
[facebook](#)



Follow us on
[twitter](#)



Watch us on
[Youtube](#)



Follow us on
[Instagram](#)



Find us on
[LinkedIn](#)

