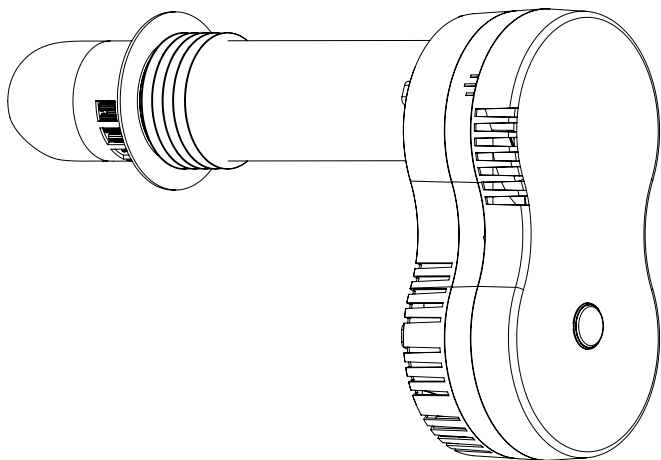


AFTER INSTALLATION THE END USER SHOULD
KEEP THIS GUIDE FOR FUTURE REFERENCE
DO NOT THROW AWAY

envirovent®

HEATSAVA INSTALLATION GUIDE



Introduction

Designed for through the wall installation, the heatSava is ideal for both refurbishment and new build properties.

The outside diameter of the heat exchange casing is smaller than a standard wall sleeve and can therefore utilize an existing one already in place. The heatSava also takes into account the complexities of different wall depths to offer 4 different main lengths that the heat exchange casing is manufactured to [see page 5]. The unit is installed from the inside out to allow for ease of installation in high-rise applications. The heatSava is exceptionally versatile and can be installed horizontally or vertically in 4 different positions through 360°. The unit has been designed to operate continuously.

Safety

Read and understand these instructions carefully before beginning installation. The unit should only be installed by a competent person.

Electrical Connection

The unit requires a continuous electrical power supply. Connection to the fixed wiring must be made outside the unit in a suitable location. The unit must be able to be disconnected from the mains supply after installation. The unit must be earthed and a suitable isolator having a minimum contact separation of 3.0mm must be used to provide isolation for the unit.

The power cable running into the unit must remain the supplied flexible cable if the power cable becomes damaged, it must be replaced by EnviroVent, an authorised service agent for your region/country, or a similarly qualified person in order to avoid a hazard.

Do not remove or tamper with any electronic components inside the unit.

Wiring Regulations

All wiring must comply with Building Regulations and the current IET Wiring Regulations (BS7671 in the UK) or equivalent standards for other countries. The final installation should be examined and tested by a qualified electrician.

The fuse in the pattress box (SELV Variants) may need to be changed if the product is installed outside of the UK.

This product is not suitable for use with a Type AC RCD 

Location

Ensure the operation of the unit does not affect the operation of open-flue appliances. If you are unsure, please consult local regulations or a qualified gas engineer. Consider the external cowl location in relation to open-flues from appliances e.g. boilers. Refer to regulations (Approved Document J for UK) for positioning of vents and flues.

In kitchens, if the unit is fitted above a cooker, it must be installed a minimum distance of 1 metre above any hob, and not have a pullcord fitted.

This unit has been tested to IPX4 and is suitable for installation within Zone 1 of bathrooms. However, we recommend that you must not position the unit near any water devices such as taps, shower heads or jets and ensure water is not aimed directly at the unit. Do not use jets or shower heads etc to clean this unit. For a bathroom application the power supply should be installed outside the bathroom as it is 230V.

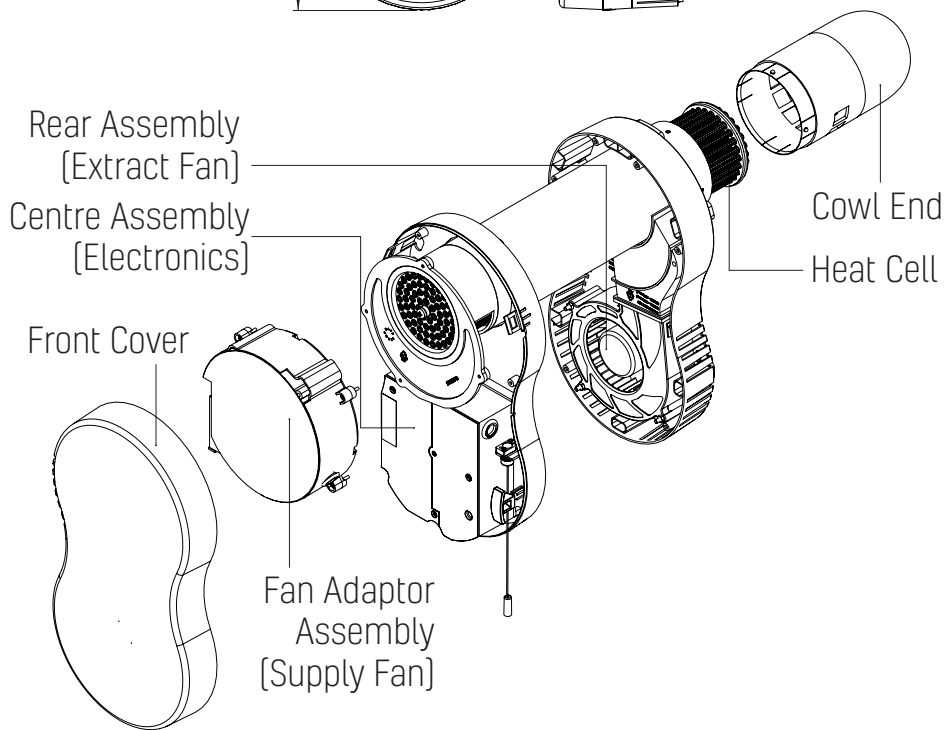
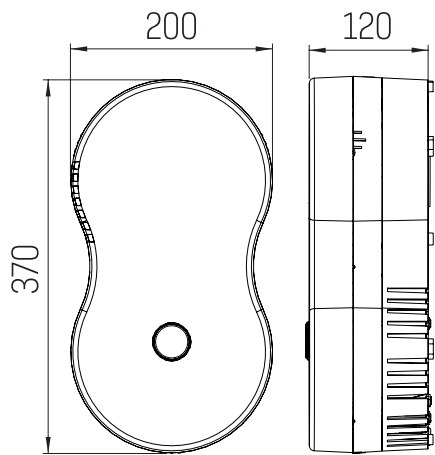
Do not store inflammable products in the vicinity of this product.

Users

This unit is not intended for use by persons [including children] with reduced physical, sensory or mental capabilities or lack of experience and knowledge, unless they have been given supervision and usage instruction by a person responsible for their safety. Children should be supervised to ensure they do not play with the unit. Cleaning and user maintenance must not be performed by children.

Technical Specifications

Unit Dimensions



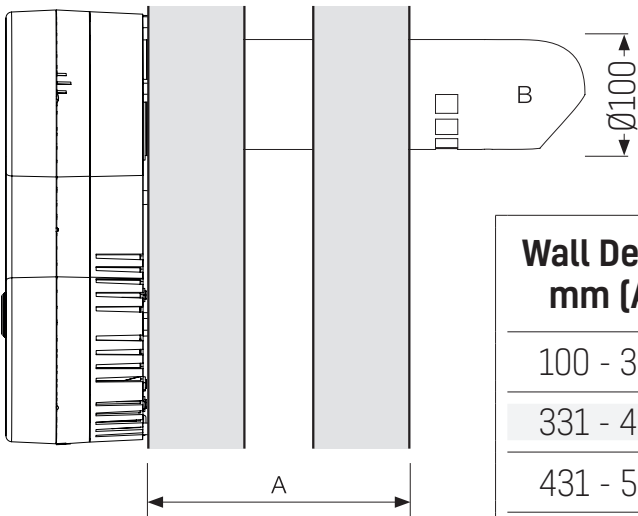
AFTER INSTALLATION THE END USER SHOULD
KEEP THIS GUIDE FOR FUTURE REFERENCE

**DO NOT
THROW AWAY**

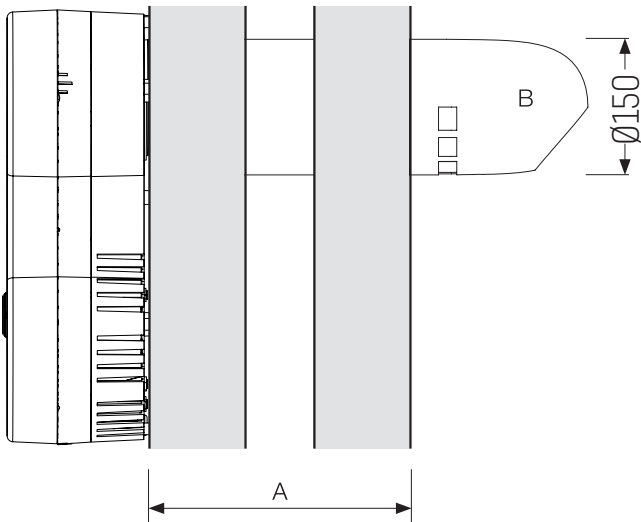
envirovent

Technical Specifications

Heat Cells Options

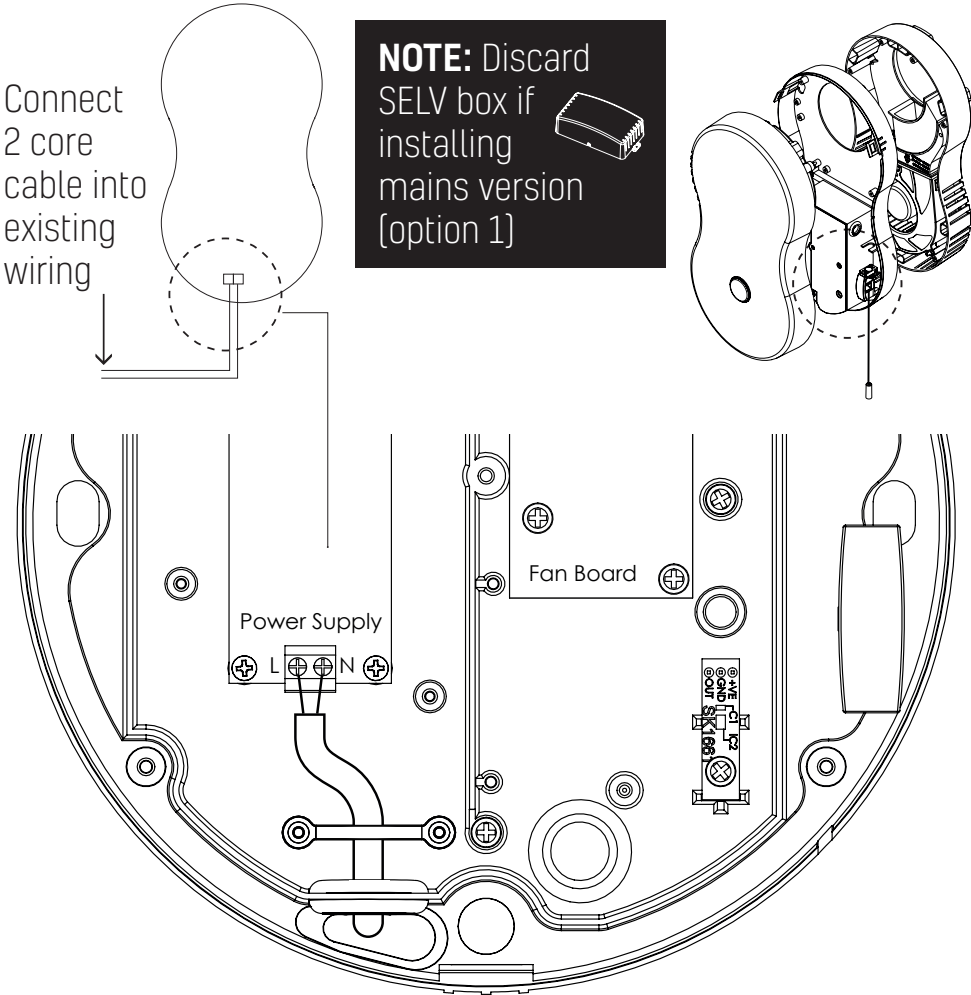


Wall Depth mm (A)	Cell Order Size mm (B)
100 - 330	330
331 - 430	430
431 - 500	500
501 - 600	600



Wiring Diagrams - Mains

NOTE: This unit is supplied as a mains version [option 1]. See next page for SELV [option 2].

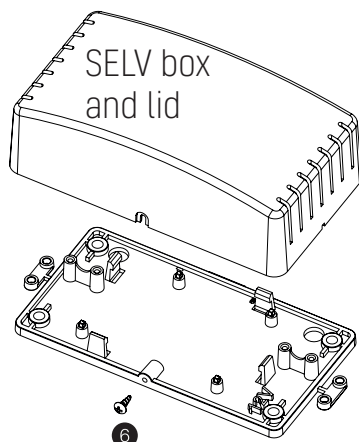
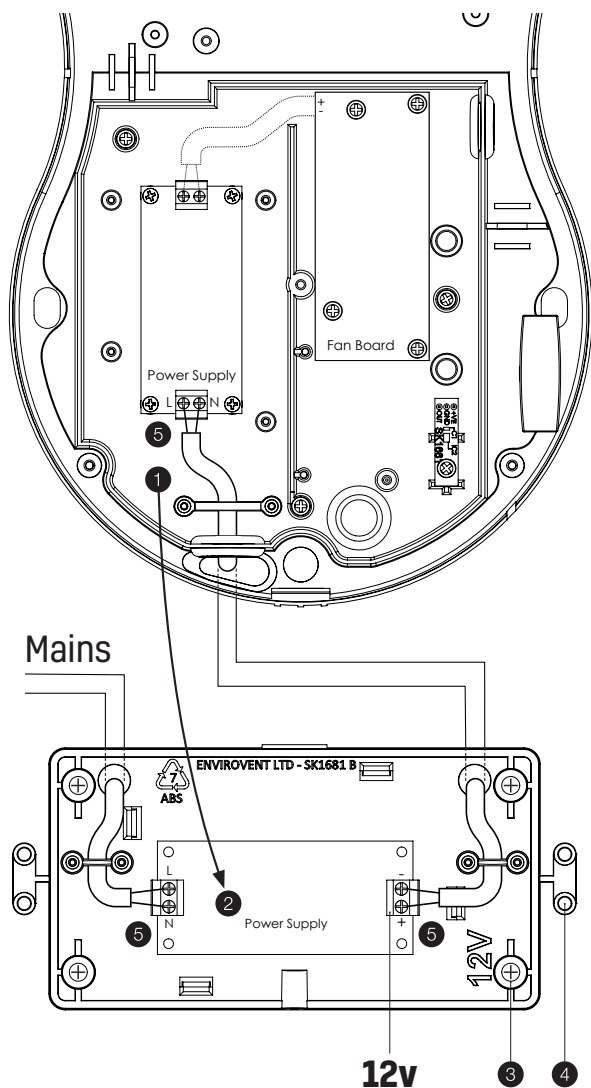


AFTER INSTALLATION THE END USER SHOULD
KEEP THIS GUIDE FOR FUTURE REFERENCE

DO NOT
THROW AWAY

Wiring Diagrams - SELV

SELV [option 2].



- ❶ Remove power supply from the unit
- ❷ Place in SELV box
- ❸ SELV Box must be secured using the 4 fixing points
- ❹ Use tags to restrain cable
- ❺ Make electrical connections as shown
- ❻ Secure the lid with screw.

Controls

Pullcord (Manual)

The heatSava comes complete with a pull cord to activate the boost if required. Pull once to activate the boost and once to deactivate.

Summer Mode (Automatic)

During warmer days, the heatSava prevents warm air from entering the room and switches to provide extract ventilation only. As the temperature falls it automatically returns to heat recovery mode.

Frost Protection (Automatic)

The heatSava has an automatic built-in frost protection mechanism to prevent any damage to the heat exchange cell in cold conditions.

Intelligent Humidity Tracking (Automatic)

The heatSava has been engineered with intelligent controls to think for itself, meaning that you don't need to press any buttons or light switches to turn it on.

When the heatSava senses a rise in humidity, caused by increased moisture generation such as through cooking or showering, the extract and supply airflows will slowly begin to increase in direct proportion to the increase in humidity.

It will then automatically track back down again when humidity falls. This controls condensation quietly and efficiently.

Box Contents

- 1x heatSava unit
- 1x Heat Cell
- 1x Instructions Guide
- 1x SELV Box
- 1x Halo (Wall Kit Contents)
- 1x Wall Seal
- 1x Fixing Template
- 1x Fixing Kit
- 10x Screws 8G x 2.0"
- 10x Red Wall Plugs
- 1x Terminal Block (Spare)
- 4x Screws 6G x 5/8"

Installation

Clearance - Walls

When core drilling into an existing wall, make sure you have enough space to move around and distance between the wall and any objects nearby i.e cupboards.

Ensure the unit is sited in a suitable position for adequate clearance on all sides for easy access to the unit for maintenance purposes and to ensure that access to the release clips on the front cover is not inhibited.

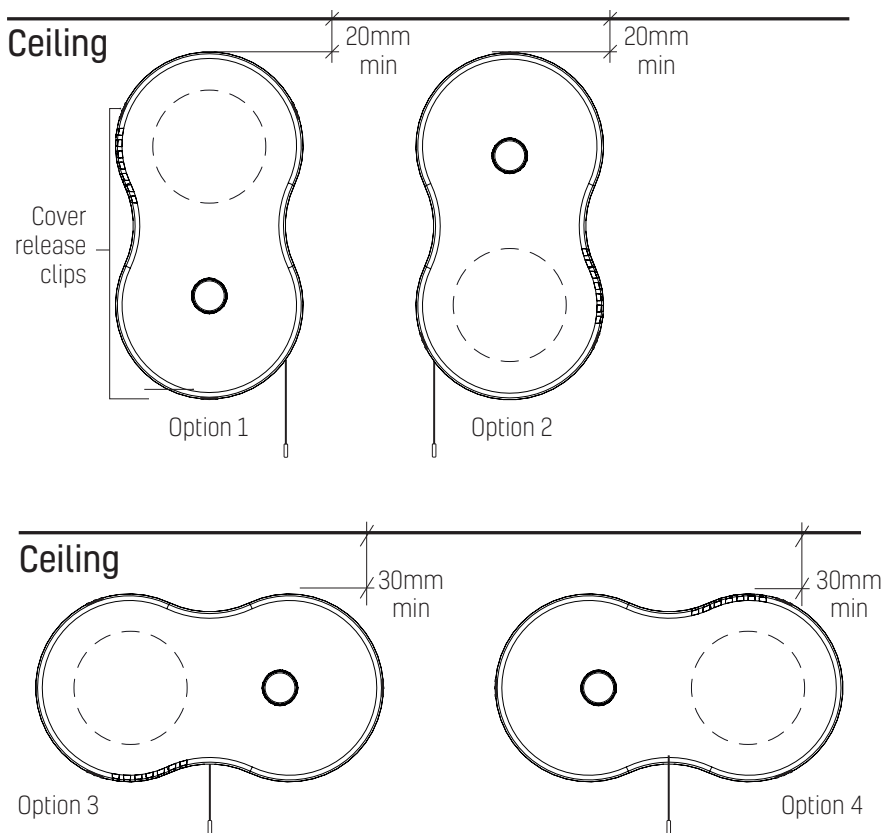
The heatSava should not be installed in the corner of a room to prevent the short circuiting of airflows.

The supply airflow is provided to the right side of the unit, and should this be blocked then the heatSava will not run as intended.

Installation

Clearance - Ceilings

First measure the wall depth. If installing into a new build application, we recommend that the unit should be installed in the position below [option 1]. If installing into an existing wall sleeve which is located near to the ceiling, the heatSava can be installed horizontally or vertically [options 2-4].

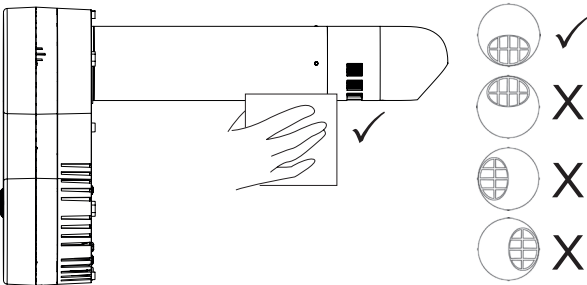
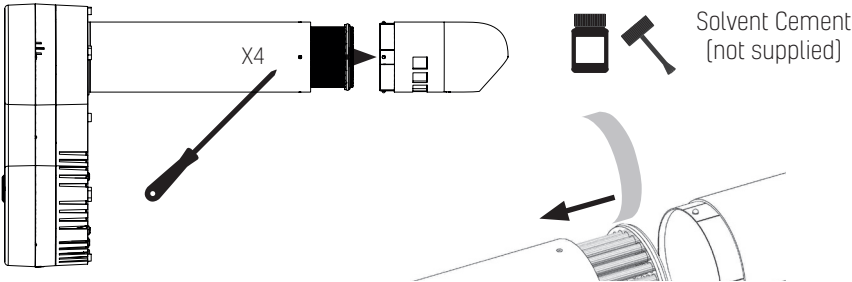
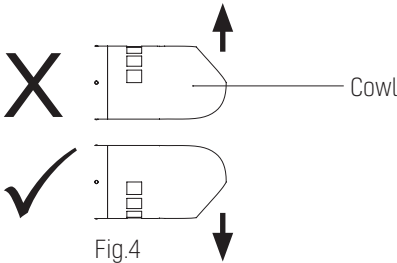
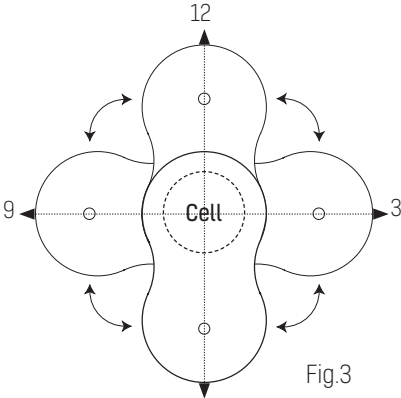


Pullcord positions shown.
Pullcord NOT supplied with wireless version of product.

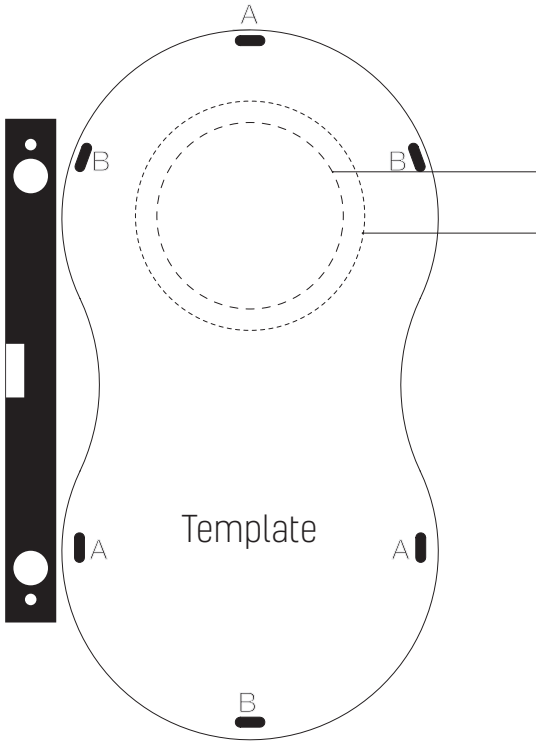
Installation

Heat Cell - Cowl Orientation

When fitting the heat cell into a wall, ensure that the cowl end is correctly orientated with the end always facing down. [Fig 4.]

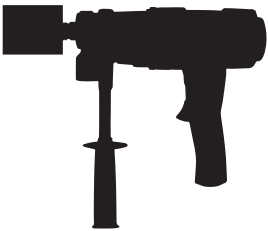


Installation



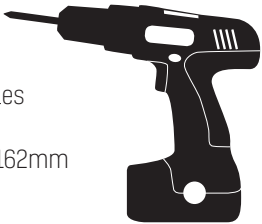
Select core drill size

100	107mm	Wall Sleeve
	117mm	Wall Seal
150	158mm	Wall Sleeve
	162mm	Wall Seal



Drill X3 holes 'A' or 'B'.

X3
Use either holes
'A' or 'B'
107, 117, 158, 162mm



AFTER INSTALLATION THE END USER SHOULD
KEEP THIS GUIDE FOR FUTURE REFERENCE

DO NOT
THROW AWAY

Installation

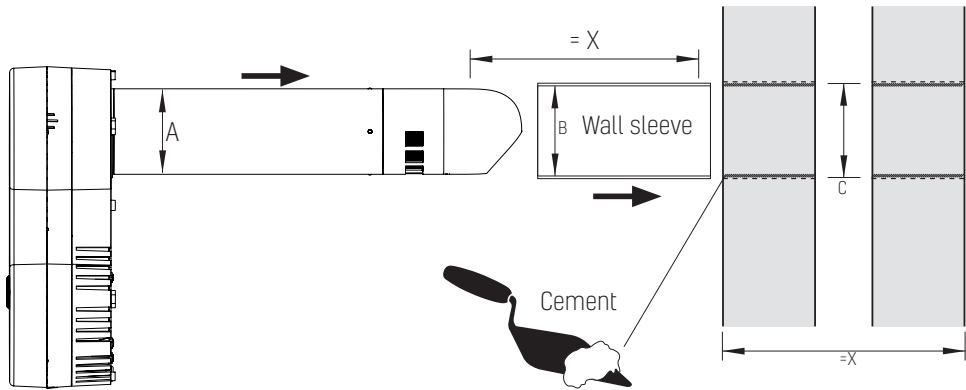
Choose rubber wall seal or wall sleeve installation.

Wall Sleeve

Place the wall sleeve into the hole. Using cement seal any gaps around the wall sleeve. Push the unit through the wall sleeve so that it is flush against the wall.

A	99mm [100] or 149mm[150] Ø overall
B	100mm or 150mm Ø internal (min)
C	107mm or 158mm Ø
X	X

Use existing sleeve or insert new sleeve into wall.

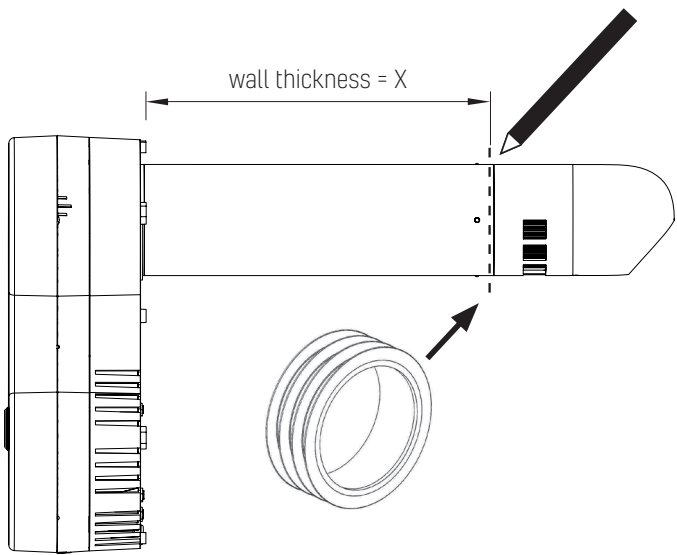


Apply cement around sleeve and insert through wall.

Installation

Rubber Wall Seal

Mark the wall thickness onto the heat cell. Using solvent cement secure the wall seal in line with the mark. Wiping away any excess solvent. Push the unit through the hole ensuring the seal is compressed in the hole & the unit is flush against the wall.



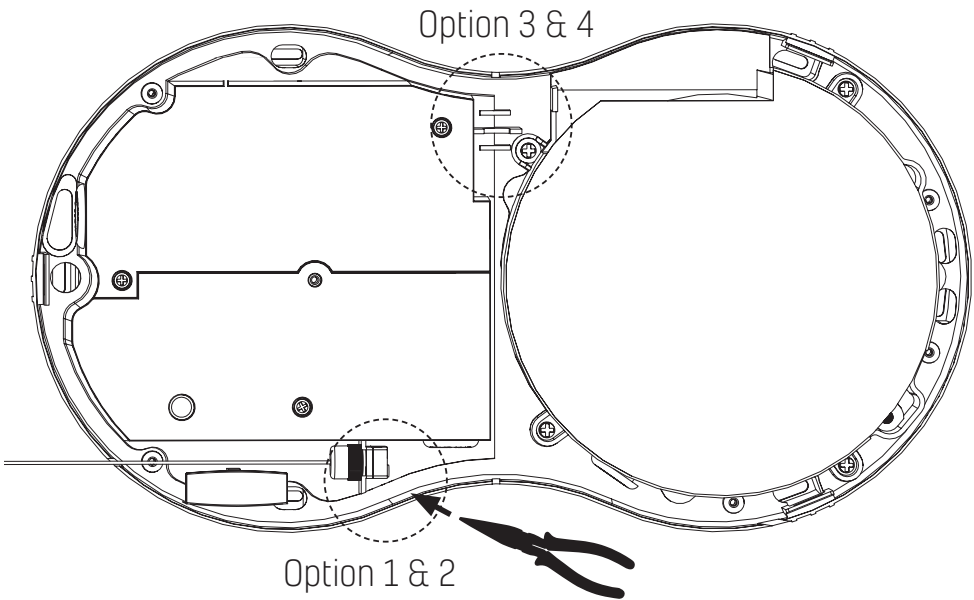
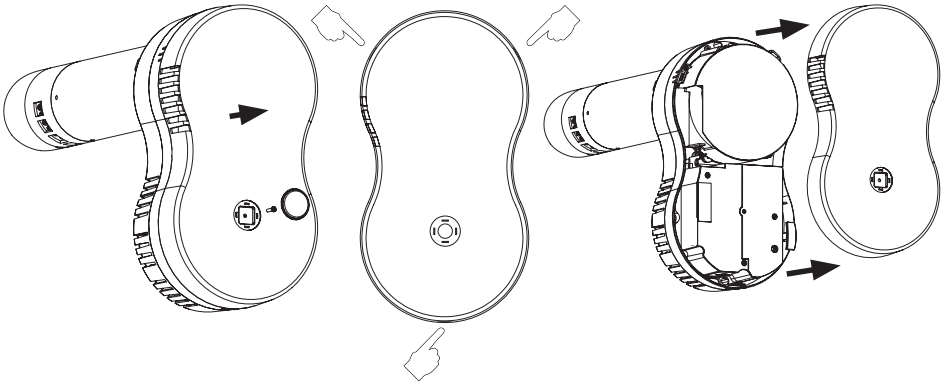
AFTER INSTALLATION THE END USER SHOULD
KEEP THIS GUIDE FOR FUTURE REFERENCE

**DO NOT
THROW AWAY**

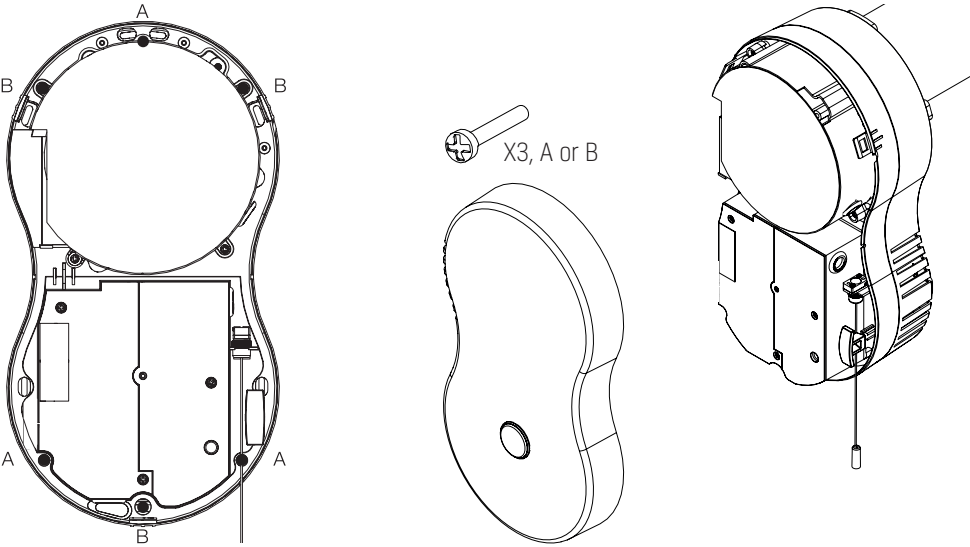
envirovent

Installation

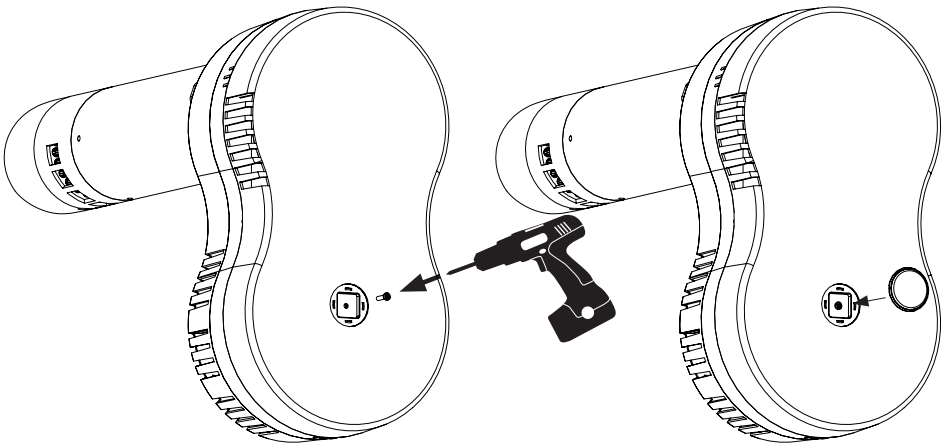
Pullcord - See page 11 for pullcord options.



Installation



Make electrical connection - See pages 7 and 8



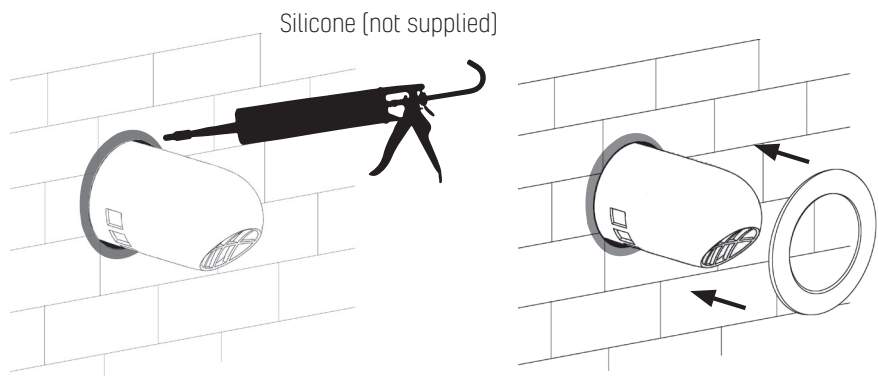
AFTER INSTALLATION THE END USER SHOULD
KEEP THIS GUIDE FOR FUTURE REFERENCE

DO NOT
THROW AWAY

Installation

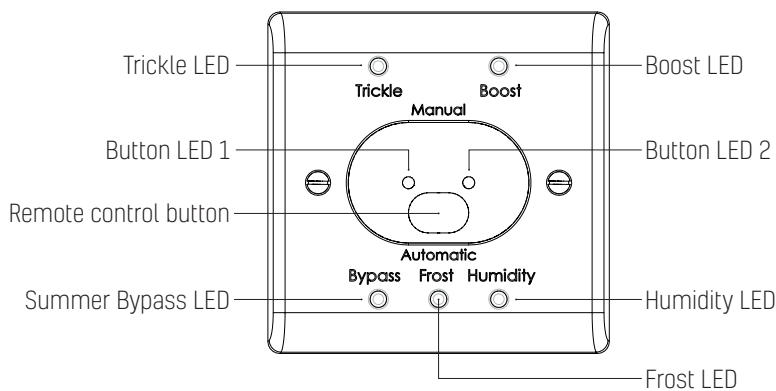
External - Fit halo if required

Apply a bead of silicone around the heat cell. Push the halo over the heat cell flush against the wall. Wipe away any excess silicone.



Installation Completed

RF Controller (Optional)



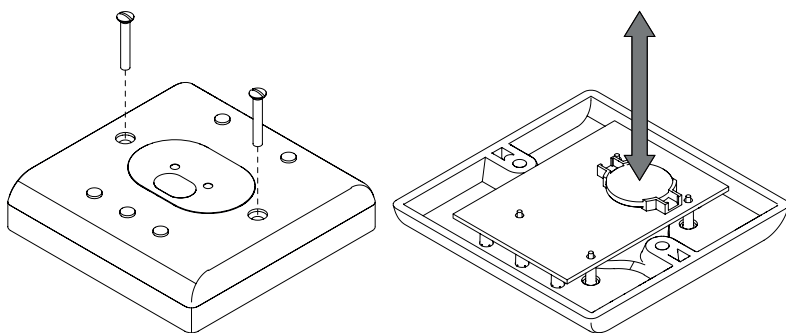
To pair an additional RF controller

1. Turn the unit off at the isolation point.
2. Restore power; for 20 seconds from restart the unit will be in pairing mode.
3. Press the remote button once within the 20 seconds and the control will pair to the unit.
4. Successful pairing is indicated by a green light on the control.

Press button once to show current function. Press button again within 3 seconds to move to next function (trickle & boost only).

Other functions are automatic, each function has an indicator light, which operates once selected.

When the remote control battery need to be replaced, remove the two screws then open the remote control. The battery is located on the back of the front cover. Replace the battery then clip the rear cover back on. The switch will remain paired with the unit after battery replacement. The remote control uses 1x CR2032 battery. Dispose of the discarded battery in a safe manner.



Cleaning & Maintenance

Cleaning

Before carrying out any cleaning work on the unit, isolate from mains power.

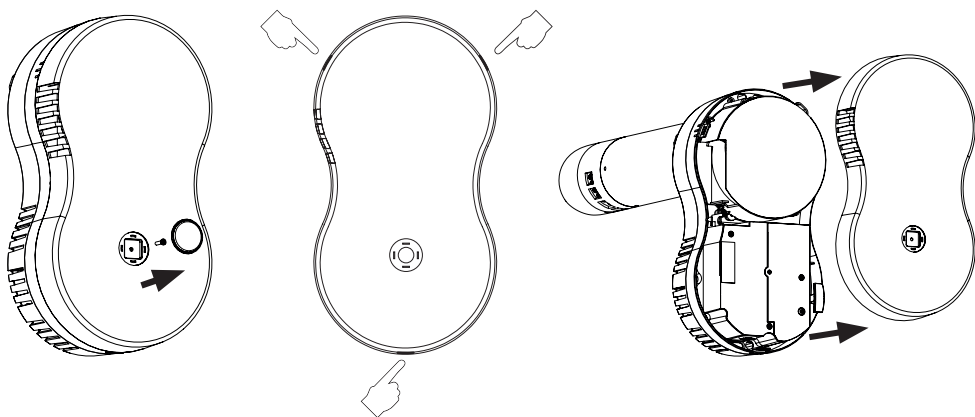
General cleaning of the vents and cells should be every 6 months max, or as required, as environments will vary.

Service Maintenance Intervals

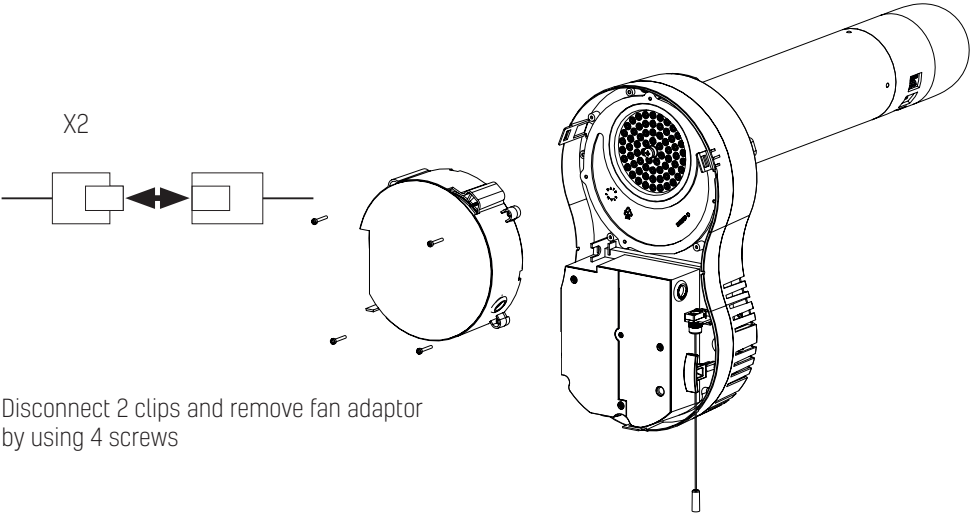
General maintenance should ideally take place every 12 months and should be carried out only by a competent tradesperson adhering to the instructions.

5 Year Service

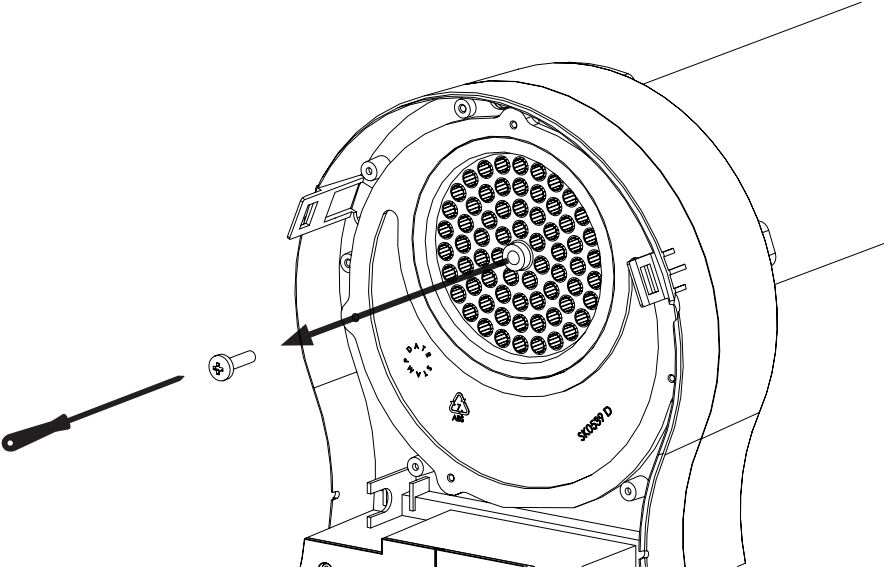
The heat exchange cell and all components and parts should be inspected every 5 years.



Cleaning & Maintenance



Disconnect 2 clips and remove fan adaptor
by using 4 screws

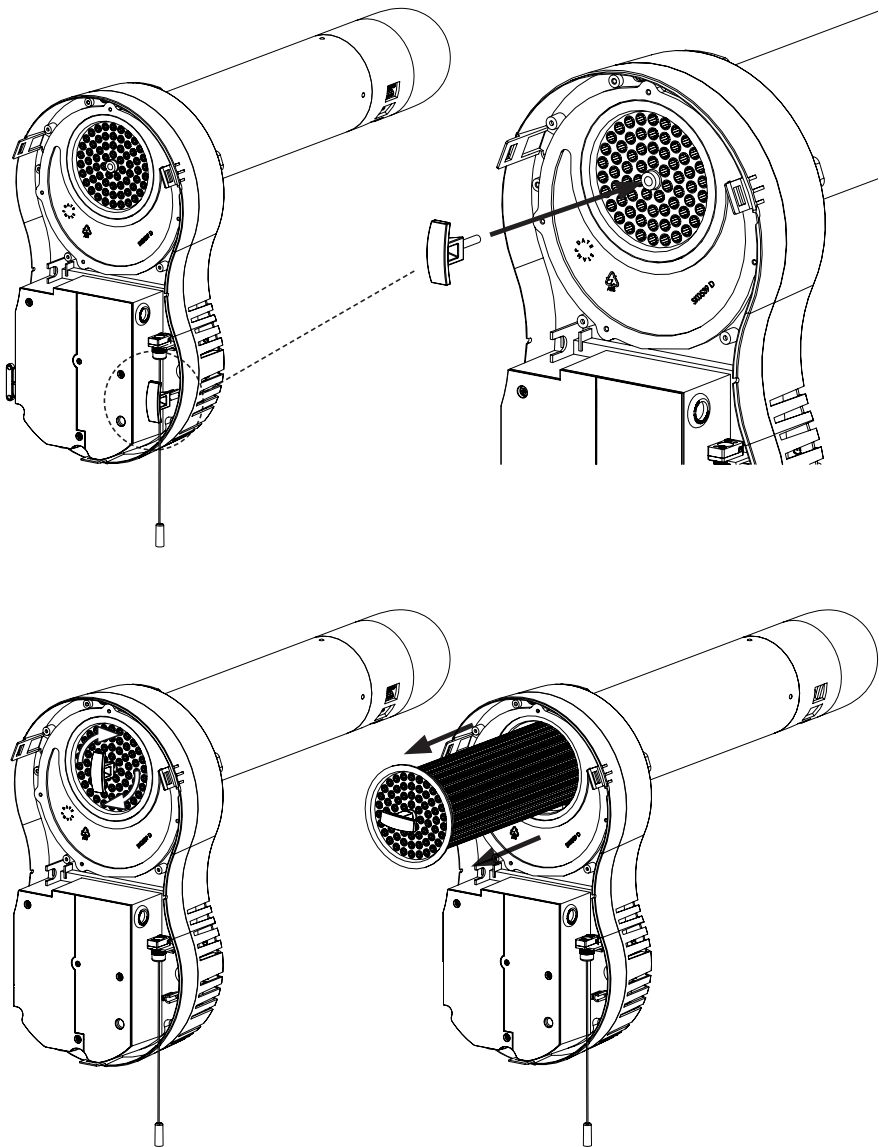


AFTER INSTALLATION THE END USER SHOULD
KEEP THIS GUIDE FOR FUTURE REFERENCE

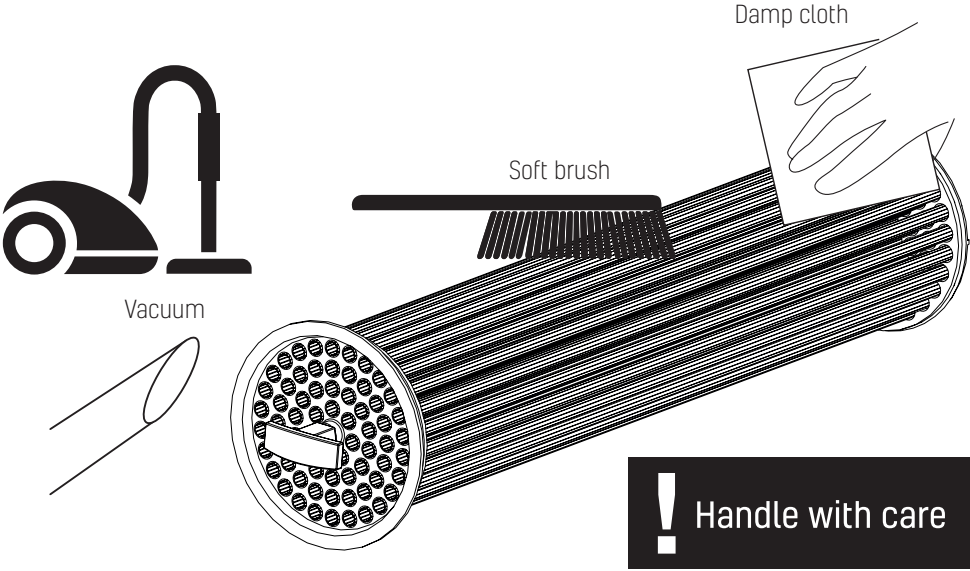
DO NOT
THROW AWAY

envirovent®

Cleaning & Maintenance



Cleaning & Maintenance



AFTER INSTALLATION THE END USER SHOULD
KEEP THIS GUIDE FOR FUTURE REFERENCE

DO NOT
THROW AWAY

Guarantee

The EnviroVent heatSava is covered by a full 5 year warranty which will benefit the occupier over many years.

What should I do if I have a problem?

If, after thoroughly reading this booklet, you feel that your heatSava is not working correctly, you can telephone 01423 810 810 (operational from 8:00am to 5:30pm Monday to Friday), and ask for technical assistance. You will either be given guidance over the telephone, or an arrangement will be made for an engineer to visit. In any event, please have the following information ready. This will enable your call to be dealt with quickly and efficiently.

Please note that proof of purchase by the way of a receipt is required and that any fans bought from an unapproved source, including but not limited to online auction websites, will render the guarantee invalid.

Serial number of the unit:

Warranty

We appreciate you choosing this quality EnviroVent product, which is designed and manufactured to the highest specification in Harrogate, North Yorkshire. We are confident that you will be delighted with the performance of the system and the resulting improvement in air quality in your home after the installation of the unit.

Your warranty covers any defect or break down that arises due to faulty materials or construction.

WARRANTY CONDITIONS AND EXCLUSIONS

- The system must be correctly installed and operated according to the instructions contained in the user guide supplied.
- The warranty will be rendered invalid if the system has been serviced, maintained, repaired, taken apart or tampered with by any person not authorised by EnviroVent Ltd.
- The warranty will be rendered invalid if the unit is turned off. Turning the unit off can damage it.
- The warranty does not cover accidental damage, misuse or abuse.
- The warranty is in addition to your statutory or legal rights.
- The guarantee will only be honoured from approved suppliers.

AFTER INSTALLATION THE END USER SHOULD
KEEP THIS GUIDE FOR FUTURE REFERENCE

**DO NOT
THROW AWAY**

envirovent®

AFTER COMPLETING INSTALLATION, PASS THIS GUIDE
ONTO THE END USER FOR FUTURE REFERENCE
DO NOT THROW AWAY



Leading Manufacturer & Supplier of
Innovative & Sustainable Ventilation Systems

EnviroVent Ltd
Harrogate West Business Park
Unit 1 Bardner Bank
Killinghall
Harrogate
HG3 2SP

T / 01423 810 810
E / info@envirovent.com
W / envirovent.com

Boxed unit weight:
16kg

Unboxed unit weight:
14kg

E&OE | MKT ENV252 - V20 - 14.09.23

Due to our policy of continuous innovation and improvement EnviroVent reserves the right to alter products specification and appearance without notice.

We want to hear from you

Your feedback is important to us as we strive to improve our products, services, and overall customer experience. Please email us to help us serve you better: feedback@envirovent.com