



PROFILE-150

Installation and Wiring Instructions



PROFILE-150 AXIAL EXTRACTOR FANS

Suitable for kitchen applications

Thank you for placing your confidence in EnviroVent by buying this product. It has been manufactured in accordance with current safety regulations, production and quality standards as laid down by the international Quality Standard ISO 9001. Please read this instruction booklet carefully before installing or operating the product. It contains important information on personal and user safety measures to be followed whilst installing, using and carrying out maintenance work on the equipment. Once the product has been installed, please pass this booklet to the end user.

Check that the product is in perfect condition while unpacking. Any fault or damage caused in origin is covered by the EnviroVent guarantee. Please make sure that the product corresponds to the one you have ordered and that the detail on the instruction label fulfil your requirements.

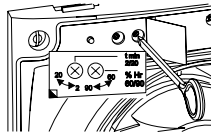
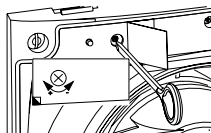
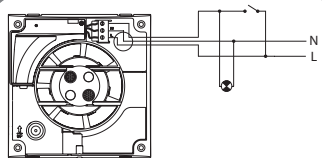
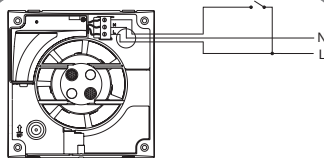
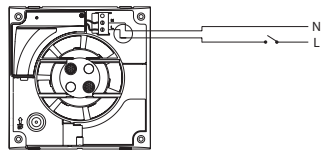
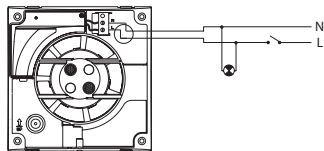
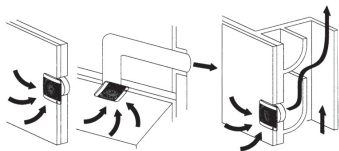
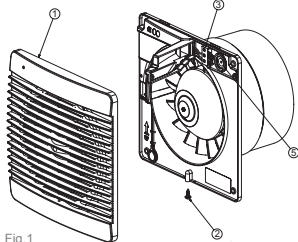
IMPORTANT:

BE SURE TO HAVE READ AND UNDERSTOOD THESE INSTRUCTIONS BEFORE BEGINNING THE INSTALLATION PROCESS

SAFETY AND RECOMMENDATIONS

- All wiring must comply with Building Regulations and the current I.E.E. Wiring Regulations (BS7671) or the equivalent standards for your country. The final installation should be examined and tested by a competent person. This fan is IP-X4 rated.
- Do not install near sources of heat in excess of 40°C.
- Position the fan at the furthest distance from the main source of air replacement in the room in order to achieve maximum airflow performance.
- This appliance is not intended for use by young children or infirm persons unless they have been adequately supervised by a responsible person to ensure that they can use the appliance safely. Young children should be supervised to ensure that they do not play with the appliance.

INSTALLATION: PROFILE -150



PROFILE-150 AXIAL EXTRACTOR FANS

Suitable for kitchen applications

INSTALLATION

IMPORTANT: before installing and wiring the unit, ensure that the mains supply is disconnected.

PROFILE-150 should only be used in conjunction with fixed wiring.

- Fig.1
- 1 – Grille
 - 2 – Cable entry point
 - 3 – Outlet
 - 4 – Fixing screw for front cover
 - 5 – Connection terminals

The PROFILE-150 is suitable for panel, ceiling or wall mounting (for wall mounting applications using EnviroVent wall kit) (fig. 2).

- Drill 160mm-diameter hole in chosen position in the panel, ceiling or wall. The hole for the duct should be angled downwards to prevent rainwater running through the duct into the unit.
- Loosen the screw (4), which holds the grille in place (1) and remove grille.
- Place the extractor against the internal wall or ceiling. For a wall mounted fan the terminal block should be at the top. Mark the 4 screw hole positions. Drill, plug and screw the extractor in position.
- Check that the wall tube is not distorted and that the impeller turns freely.
- This fan must be installed by a competent person. Complete electrical wiring of fan as outlined in the Wiring Instructions below. Then refit the grille and tighten the screw (2).

WIRING

IMPORTANT: ENSURE THAT THE MAINS SUPPLY IS SWITCHED OFF BEFORE MAKING ELECTRICAL CONNECTIONS.

The PROFILE is an extractor fan designed for a single-phase supply, with voltage and frequency as indicated on the rating plate of the unit. The units are manufactured with double insulation (Class II) and therefore do not require an earth connection.

Once the cable has been introduced through the cable entry point (2), proceed using the electrical wiring diagram applicable to the selected model as follows:

• PROFILE – 150 S

This model uses the following wiring diagrams:

Fig.3. Fan operating through a light switch.

Fig.4. Fan operating through an independent switch.

• PROFILE – 150 T

Models fitted with adjustable timer.

The timer enables the fan to continue running for the selected period after the switch has been turned off.

Fig.5. Fan operating through an independent switch.

Fig.6. Fan operating through a light switch.

The desired run-on time is selected by means of an adjuster "T" positioned on the printed circuit board (Fig.8), and is accessible once the grille (1) is removed.

- To reduce the run-on time, turn anticlockwise.
- To increase the run-on time, turn clockwise.

• PROFILE – 150 HT

Models provided with an electronic humidistat, which can be adjusted from 60% to 90% RH (relative humidity), and with a timer, adjustable between 1 and 20 minutes.

Operation

Case 1: Automatic operation (Fig.4).

The humidistat causes the extractor to operate automatically when the humidity level in the room is higher than the set level. The extractor will stop automatically when the humidity drops below the selected level and after the selected period, set on the timer.

Case 2: Automatic with manual override.

Automatic operation as in case 1, but with the facility to override the humidistat by means of the light switch (Fig.6), when the humidity level in the room is lower than the selected level. In this case, the extractor continues to operate for the period set on the timer, after the light switch has been switched off.

ATTENTION: When the humidity rises above the selected value, the automatic option takes precedence over the manual and the unit cannot then be switched off using a switch.

The desired humidity level and time delay are set by means of adjusters positioned on the printed circuit board (Fig.7) and are accessible once the grille (1) is removed.

The humidity is set by the adjuster "% RH"

- To increase the humidity setting turn anti-clockwise (min.60%).
- To reduce the humidity setting turn clockwise (max.90%).

The timer is set by the adjuster "T min "

- To reduce the "run on" time, turn anti-clockwise (min 1 min).
- To increase the "run on" time, turn clockwise (max. 20 mins).

• **PROFILE – 150 S, T and HT**

These models are all fitted with an automatic shutter. The thermal actuator takes some seconds to open and close completely.



CLEANING AND MAINTENANCE

IMPORTANT: DISCONNECT FROM THE MAINS SUPPLY BEFORE CARRYING OUT CLEANING OR MAINTENANCE

To ensure optimum performance from your extract fan, it should be cleaned regularly by a competent person.



AFTER SALES SERVICE

We recommend you recommend you recommend you do not dismantle or remove any other parts than those mentioned, as any tampering would automatically cancel the guarantee. If you detect any fault, contact EnviroVent on 01423 810810.

Thank you for choosing EnviroVent - the fastest growing ventilation company in the UK.

And remember, if you have any problems please call our dedicated Technical Team on the Hotline 0845 27 27 810.



GUARANTEE

The PROFILE-150 range products are covered by a two year guarantee, subject to the specified maintenance stated within this booklet. In the event of any failure of the fan within two years of supply- excluding only wilful or careless damage – we will exchange the fan free of charge.

EnviroVent Ltd
EnviroVent House
Hornbeam Business Park
Harrogate
HG2 8PA

Name and address of purchaser

Model

Date of purchase

Dealer stamp



EnviroVent Ltd
EnviroVent House
Hornbeam Business Park
Harrogate
HG2 8PA

01423 810 810
info@envirovent.com

www.envirovent.com

Ref.9023007502

