

envirovent®

SABIK RANGE

High Efficiency Whole House Heat Recovery Systems



SABIK RANGE

(350, 350E, 500 and 500E)

High Efficiency Whole House Heat Recovery Systems



About

The Sabik range has been designed to provide balanced and sustainable ventilation whilst incorporating modular features and user friendly controllability resulting in high efficiency, market leading ventilation systems.

The residential units have significant airflow capacity of up to 414m³hr* and 601m³hr*, and are suitable for on site handing for both airflow and condensate drainage, providing ultimate flexibility for every scenario.

- ❶ Delivering up to 91% thermal efficiency.
- ❷ Passivhaus certified (pre-heater module and enhanced filter required).
- ❸ Customisable with optional modules.
- ❹ Choice of heat exchanger: sensible (350 & 500) or enthalpy (350 E and 500 E).
- ❺ Minimal noise levels.
- ❻ 100% mechanical summer bypass as standard.
- ❼ Frost Protection.
- ❽ On site unit handing to suit every scenario.
- ❾ ISO Coarse 65% filters as standard with optional ePM1 70%.
- ❿ 2 year warranty.



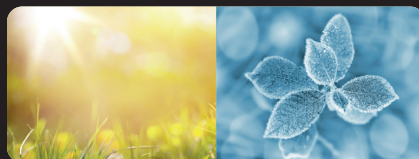
Modularity

Sabik units are packed with key features as standard such as integrated relative humidity sensor, 100% mechanical summer bypass, frost protection, touchscreen controller and on site handing.

As well as the above, Sabik can be customised to your specific needs by adding optional features such as: pre-heater, Volatile Organic Compounds (VOC) sensor, constant flow module, wall spacer bracket and increased level of filtration, this provides ultimate versatility and reinforces this range as an all round ventilation solution. These optional features are able to be easily installed via the control panel on the units - see the installation guide for further information.

Summer Bypass & Frost Protection

The Sabik range comes with a mechanical summer bypass as standard. The bypass contributes to an improved comfort level in summer and can be controlled manually or automatically. Standard frost protection is offered through airflow control. An optional preheater for intelligent frost protection can also be utilised if required, or for Passivhaus compliance.



Constant Flow Control

An optional extra and part of the range of modular features. This constant flow, also known as 'constant volume' ensures that the unit remains as efficient as possible, as well as the ease of commissioning the systems. This therefore saves on installation costs, whilst ensuring that the unit reaches its full performance potential.

Low Noise Levels

The sound levels on the systems are as low as possible. The units provide reduced air leakage, high thermal insulation and therefore sound levels are minimised as a result.

Control Options

The Sabik 350 and 500 can be controlled through the touch screen controller. Optional external controls such as AirSens® can also be installed.



Passivhaus Certified



The Sabik 350 and 500 units are Passivhaus certified providing that the modular preheater and enhanced ePM1 70% filter are installed. The Passivhaus concept is the only internationally recognised, performance-based energy standard in construction.

Easy Maintenance & Commissioning

The units come as standard with two ISO Coarse 65% filters that can be easily changed. A high performance fine particle filter is also available as an optional extra, and required if building to the Passivhaus Standard. This enhanced filter is ideal for people with respiratory conditions and allergies.

The unit has flexible commissioning methods to ensure the utmost ease when it comes to setting the system airflows including the use of the modular constant flow control.



Constant Flow Control

Features & Benefits



Just some of the reasons why you should choose the Sabik 350 & 500

Filter replacement indicator

Automatic filter change alert



Constant Flow Module[†]

Keeps flow constant, adapting to the installation & to the condition of the filters



Temperature & Humidity Control

Takes outdoor & indoor conditions into account



VOC Sensor Module[†]

Automatic adjustment of the flow according to the indoor air quality



Automatic or Manual Bypass

Energy saving with free cooling when the outdoor conditions permit so



Choice

of Standard Sensible high efficiency counterflow heat exchanger or Enthalpy version.



Pre-Heating Module[†]

Ensures that the unit continues to operate even in colder temperatures



Passivhaus Certified**

Internationally recognised, performance-based energy standard in construction



Sensor Options

The Sabik 350 and 500 can be connected to an AirSens® sensor. This means they react automatically to changes in air quality, instantly increasing the extract rate from the property to maintain a healthy environment when needed.

AirSens options available: Relative Humidity, Volatile Organic Compounds, Temperature and CO2.

[†]in free air. ^{**}requires enhanced filter grade & preheater for compliance. [†]optional modular features.

Annual Running Costs

Please scan our QR code to see the **annual running costs** of this product.



Or visit:
[envirovent.com/
annual-running-costs](https://envirovent.com/annual-running-costs)

Options & Ancillaries

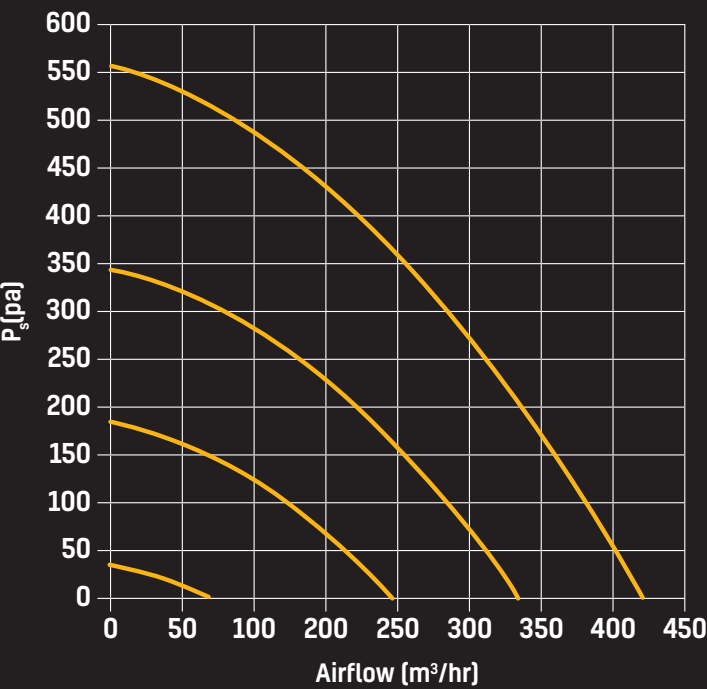
DESCRIPTION	CODE(S)	
	Sabik 350	Sabik 500
2x ISO Coarse 65% Filters	FILTER-SK350-G4	FILTER-SK500-G4
1x ISO Coarse 65% Filter, 1x ePM1 70% Filter	FILTER-SK350-G4/F7	FILTER-SK500-G4/F7
Modular Preheater	SABIK350-PH	SABIK500-PH
Constant Flow Module	SABIK-CV	
VOC Sensor	SABIK-VOC	
Wall Spacer Bracket	SABIK-BRACKET	
Condensate Kit	KITCONDENSATESK	
4x 180 - 150mm metal reducers	-	KITREDUCERBK

SAP Appendix Q Performance

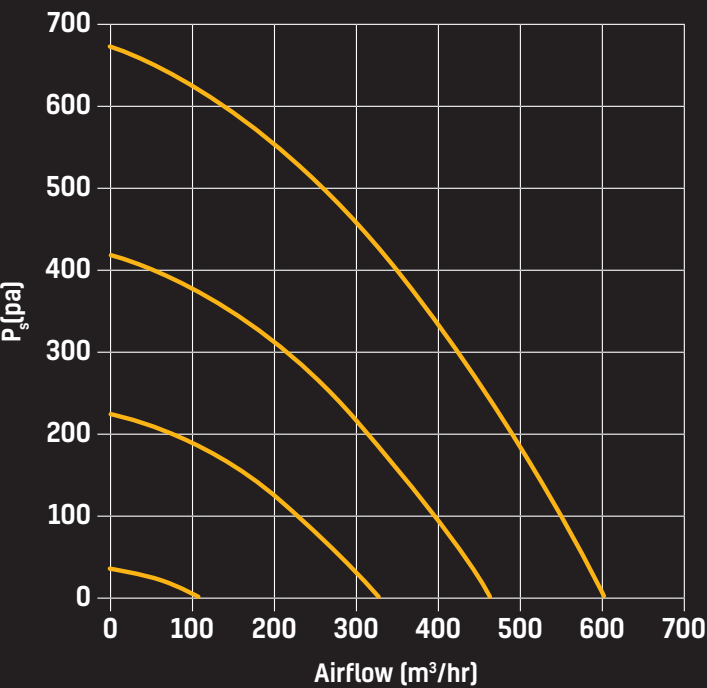
Exhaust Terminal Configuration - Kitchen + Additional Wet Rooms	SFP (W/l/s)			
	350	350 E	500	500 E
Kitchen + 1 additional wet room	0.68	0.54	0.77	0.71
Kitchen + 2 additional wet room	0.65	0.55	0.70	0.65
Kitchen + 3 additional wet room	0.71	0.56	0.73	0.64
Kitchen + 4 additional wet room	0.84	0.66	0.79	0.75
Kitchen + 5 additional wet room	0.94	0.78	0.88	0.87
Kitchen + 6 additional wet room	1.10	0.97	1.02	1.00
Kitchen + 7 additional wet room	-	-	1.19	1.18

Exhaust Terminal Configuration - Kitchen + Additional Wet Rooms	Heat exchange efficiency (%)			
	350	350 E	500	500 E
Kitchen + 1 additional wet room	91	83	89	84
Kitchen + 2 additional wet rooms	90	81	89	84
Kitchen + 3 additional wet rooms	89	80	87	82
Kitchen + 4 additional wet rooms	89	78	86	81
Kitchen + 5 additional wet rooms	88	76	85	80
Kitchen + 6 additional wet rooms	87	75	84	78
Kitchen + 7 additional wet rooms	-	-	85	77

Performance Curves SABIK 350 / SABIK 350E



SABIK 500 / SABIK 500E

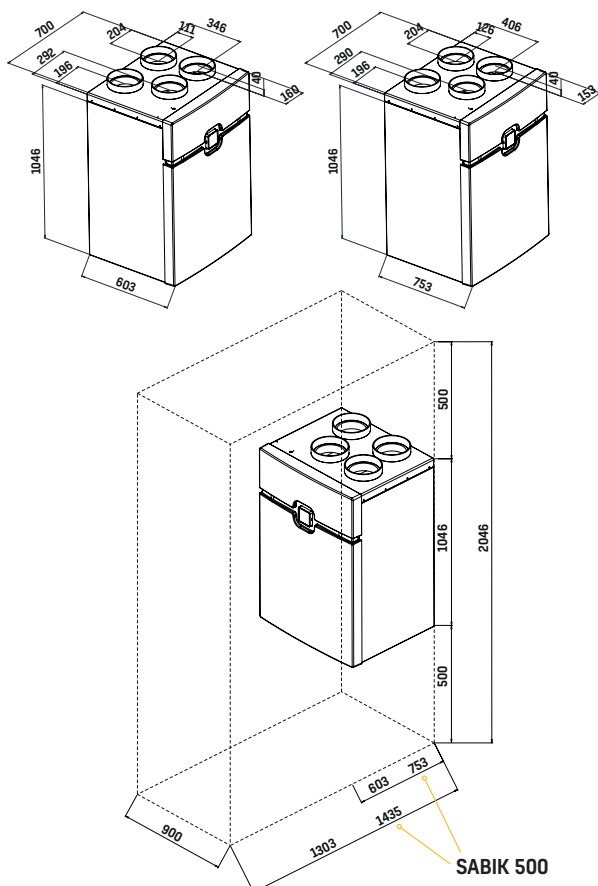


Technical Data

	350	350 E	500	500 E
Ventilation capacity at 100 Pa (m ³ /hr)	375		550	
Max Power Usage (W)	145		265	
Max efficiency % (Sensible)	89	83	90	86
Max efficiency % (latent)	-	80	-	82
Weight	50		63	
Mechanical Bypass		✓		
Frost Protection		✓		
Relative Humidity Sensor as Standard		✓		
On Site Handling		✓		

Dimensions (mm)

SABIK 350/E SABIK 500/E



Technical Specification

Product

The Sabik units are highly efficient, whole house heat recovery systems.

Application Suitability

The Sabik 350 and 500 units are ideal for residential properties to provide a constant supply of filtered, tempered air and maintain correct humidity levels.

With maximum airflow capacity of 414 m³/h and 601 m³/hr respectively, the units can be handed on site providing versatility for application. The units are Passivhaus certified and have optional modules available.

Controls

The unit is controlled with the supplied wired touch screen controller. Or alternatively, using the built in programmable controller, the relative humidity sensor, or optional external VOC/CO₂ sensors.

Motor

The unit incorporates Ultra Low Watt EC motor technology to provide the lowest possible SFP and unit running costs, with sealed for life ball bearings and designed to operate continuously at a pre-set 'background' rate.

Fan

EC motors power the centrifugal backward curved fan impellers.

Heat Exchange Cell

There are two options for Sabik, a Sensible heat exchange cell (SABIK350 and 500) or an Enthalpy heat exchange cell (SABIK350 E and SABIK500 E). Both are highly efficient counterflow cells.

Summer Bypass & Frost Protection

The Sabik units incorporate a mechanical summer bypass. The bypass contributes to an improved comfort level in summer and is controlled automatically by measuring indoor and outdoor temperatures.

Intelligent frost protection can be provided through the optional preheater to guarantee high efficiency, even at extremely low temperatures. This energy-efficient frost protection helps to achieve significant energy savings per year.

Constant Flow Control (Optional)

The 'constant flow' technology ensures maximum efficiency and that the commissioned airflow rate is always delivered despite any resistance encountered in the ductwork or filters. The 'constant flow control' system also enables commissioning to be carried out much quicker and more easily, saving on installation costs.

Filtration

The unit shall incorporate 2 x ISO Coarse 65% (G4) filters with the option of an ePM1 70% (F7) supply filter.

Servicing & Maintenance

Supply and extract filters shall be located within the unit and exchanged when required.

Warranty

The unit shall be covered by a 2 year warranty subject to the specified maintenance and servicing.

Installation

A full installation guide is enclosed with all products; or sent separately in advance if required. The unit is capable of being wall mounted with the optional wall spacer bracket if required. The unit is suitable for installation in a utility room or cupboard space. The Sabik 350 and 500 incorporates Ø150mm and Ø180mm extract and supply spigots respectively.

Accreditation

SAP PCDB Listed.

Conforms to the requirements of the UK Building Regulations and the Technical Standards for Ventilation.

Conforms to requirements of the EC council directives relating to Electromagnetic Compatibility and Electrical Safety (LDV and EMC).

CE and UKCA Marked.

envirovent®

Leaders in the manufacture of innovation
and sustainable ventilation

EnviroVent Ltd
Harrogate West Business Park
Unit 1 Bardner Bank
Killinghall, Harrogate
HG3 2SP

T / 01423 810 810
E / enquiries@envirovent.com
W / www.envirovent.com

Due to our policy of continuous innovation and improvement, EnviroVent reserves the right to alter products specification and appearance without notice.

E&OE | MKT ENV503 - V6 - 28/02/2025

Copyright © EnviroVent Ltd 2025



Follow us on
[facebook](#)



Follow us on
[twitter](#)



Watch us on
[Youtube](#)



Follow us on
[Instagram](#)



Find us on
[LinkedIn](#)

