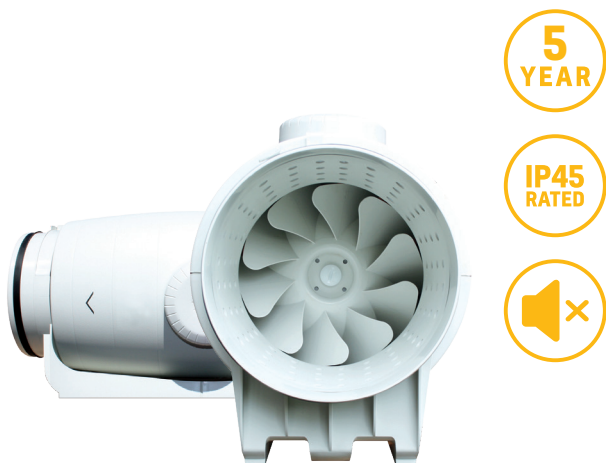


## TECHNICAL DATA SHEET

### Silent MV 800/200 | Ultra Quiet In-line Duct Fan



#### KEY FEATURES

- ✓ Sound absorbent insulation
- ✓ 360° rotating connection box
- ✓ Sealed for life ball bearings
- ✓ Fitted with a 2/3 speed motors
- ✓ 5 year warranty
- ✓ IP44 rated
- ✓ Incredibly silent running
- ✓ High performance
- ✓ Significant energy savings
- ✓ Complies with building regulations
- ✓ Flexible location
- ✓ Easy maintenance

#### PRODUCT

Ultra quiet and low profile helicocentrifugal in-line fans suitable for a wide range of domestic and commercial applications. Fitted with sound absorbent insulation and manufactured with a with an adjustable two speed 230V 50Hz motor.

Easy to install and maintain, the SILENT MV fans guarantee exceptional performance with significant noise reduction.

#### APPLICATION SUITABILITY

Presenting the world's quietest in-line fan range in their class, the SILENT MV range creates a quantum leap forward in technology to improve the acoustic performance of up to 12 dB(A) compared with similar products on the market.

The SILENT MV range is the result of an intense R&D, technological and economic investment to ensure that you can be guaranteed of a product range that provides exceptional performance with significant noise reduction. Following extensive aerodynamic testing, we have been able to not only reduce the amount of noise produced, but also ensure that the noise level that is actually emitted is at a far lower frequency, providing a quiet and ambient environment.

#### INSTALLATION

Full installation guide is enclosed with all products; or sent separately in advance - if required.

#### MOTOR

Manufactured with an adjustable three speed 230V 50Hz motor.

#### FAN

The impeller is mixed flow type.

#### TECHNICAL SPECIFICATIONS

MODEL	SETTING	SILMV800/200
Speed (RPM)	Low	1660
	Medium	1870
	High	2170
Watts (W)	Low	90
	Medium	92
	High	102
Amps (A)	Low	0.46
	Medium	0.47
	High	0.50
Airflow l/s (m³/h)	Low	192 (690)
	Medium	217 (780)
	High	253 (910)
dB(A) @ 3m	Low	22
	Medium	24
	High	28
Max. Working Temp (°C)	Low	60
	Medium	
	High	
Ø Duct (mm)	Low	200
	Medium	
	High	

# TECHNICAL DATA SHEET

## Silent MV 800/200 | Ultra Quiet In-line Duct Fan

### SERVICING / MAINTENANCE

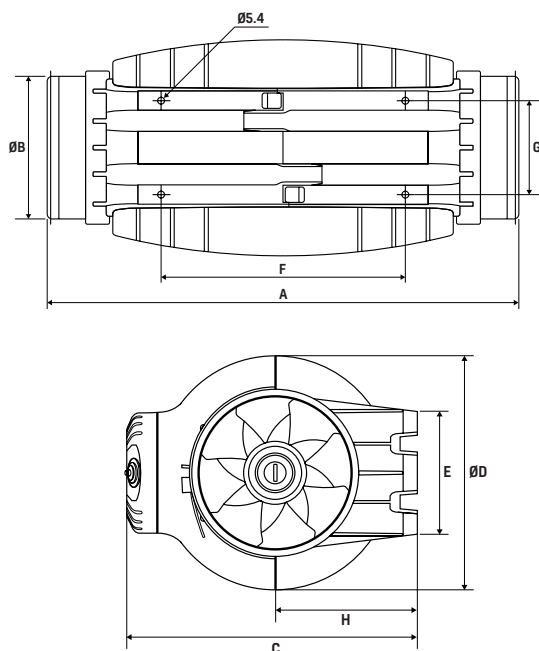
The central body of the SILENT MV can be easily dismantled from the connections to enable rapid maintenance, without the need to interfere with the ducting.

### WARRANTY

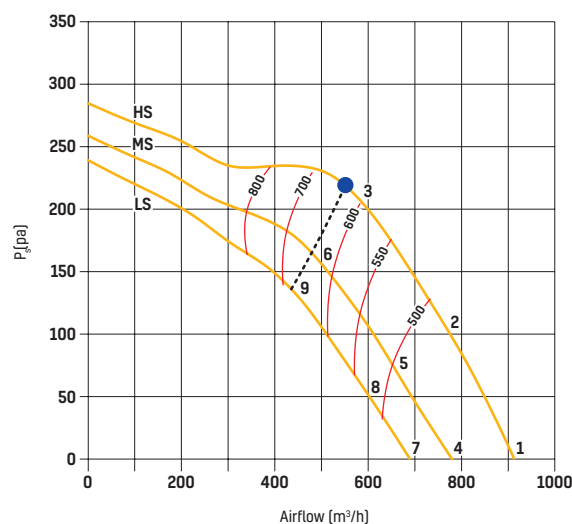
The SILENT MV is covered by a 5 year warranty.

### DIMENSIONS (MM)

MODEL	Ø	A	ØB	C	ØD	E	F	G	H
SILMV800/200		568	198	327	264	145	340	129	164



### PERFORMANCE CURVE



### SOUND POWER

Sound power level spectrum in dB(A)									
Working Point	63	125	250	500	1000	2000	4000	8000	LwA
1	Inlet	27	40	49	60	61	62	57	66
	Outlet	44	46	51	60	64	63	60	69
	Break-Out	18	34	35	42	45	41	32	48
2	Inlet	26	38	47	57	59	59	54	64
	Outlet	42	45	50	60	63	61	58	67
	Break-Out	18	32	33	40	42	39	29	46
3	Inlet	26	40	50	60	61	60	56	66
	Outlet	33	40	51	60	61	59	55	65
	Break-Out	18	33	36	43	44	40	30	48
4	Inlet	23	36	45	56	58	58	54	63
	Outlet	41	43	48	57	61	60	56	65
	Break-Out	14	30	31	39	41	38	28	45
5	Inlet	23	35	43	54	56	56	51	61
	Outlet	39	41	47	56	59	58	54	63
	Break-Out	14	29	29	36	39	36	25	42
6	Inlet	24	37	47	58	58	58	53	63
	Outlet	30	37	48	57	58	56	52	63
	Break-Out	15	31	33	41	42	38	27	45
7	Inlet	20	34	43	53	55	55	51	60
	Outlet	38	40	45	54	58	57	54	62
	Break-Out	12	28	29	36	38	35	25	42
8	Inlet	20	32	41	51	53	53	48	58
	Outlet	36	39	44	54	57	55	52	61
	Break-Out	12	26	27	34	36	33	23	40
9	Inlet	22	35	45	56	56	56	51	61
	Outlet	28	35	46	55	56	54	50	60
	Break-Out	13	29	31	38	39	35	25	43