

TECHNICAL DATA SHEET

Silent MV 1000/200 | Ultra Quiet In-line Duct Fan



KEY FEATURES

- ✓ Sound absorbent insulation
- ✓ 360° rotating connection box
- ✓ Sealed for life ball bearings
- ✓ Fitted with a 2/3 speed motors
- ✓ 5 year warranty
- ✓ IP44 rated
- ✓ Incredibly silent running
- ✓ High performance
- ✓ Significant energy savings
- ✓ Complies with building regulations
- ✓ Flexible location
- ✓ Easy maintenance

PRODUCT

Ultra quiet and low profile helicocentrifugal in-line fans suitable for a wide range of domestic and commercial applications. Fitted with sound absorbent insulation and manufactured with a with an adjustable two speed 230V 50Hz motor.

Easy to install and maintain, the SILENT MV fans guarantee exceptional performance with significant noise reduction.

APPLICATION SUITABILITY

Presenting the world's quietest in-line fan range in their class, the SILENT MV range creates a quantum leap forward in technology to improve the acoustic performance of up to 12 dB(A) compared with similar products on the market.

The SILENT MV range is the result of an intense R&D, technological and economic investment to ensure that you can be guaranteed of a product range that provides exceptional performance with significant noise reduction. Following extensive aerodynamic testing, we have been able to not only reduce the amount of noise produced, but also ensure that the noise level that is actually emitted is at a far lower frequency, providing a quiet and ambient environment.

INSTALLATION

Full installation guide is enclosed with all products; or sent separately in advance - if required.

MOTOR

Manufactured with an adjustable three speed 230V 50Hz motor.

FAN

The impeller is mixed flow type.

TECHNICAL SPECIFICATIONS

MODEL	SETTING	SILMV1000/200
Speed (RPM)	Low	1920
	Medium	2210
	High	2450
Watts (W)	Low	122
	Medium	127
	High	130
Amps (A)	Low	0.53
	Medium	0.55
	High	0.55
Airflow l/s (m³/h)	Low	219 (790)
	Medium	253 (910)
	High	289 (1040)
dB(A) @ 3m	Low	24
	Medium	27
	High	29
Max. Working Temp (°C)	Low	60
	Medium	
	High	
Ø Duct (mm)	Low	200
	Medium	
	High	

TECHNICAL DATA SHEET

Silent MV 1000/200 | Ultra Quiet In-line Duct Fan

SERVICING / MAINTENANCE

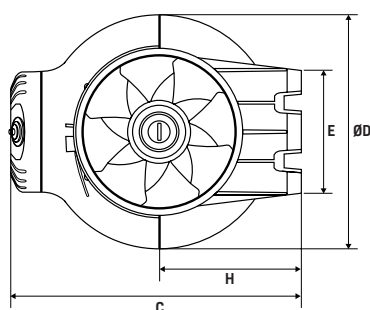
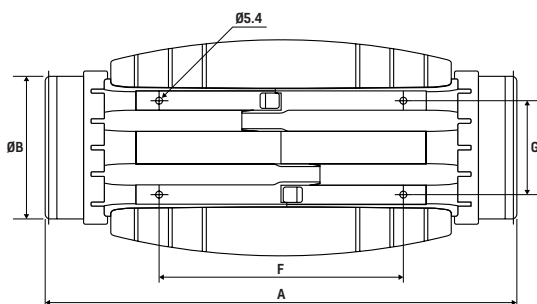
The central body of the SILENT MV can be easily dismantled from the connections to enable rapid maintenance, without the need to interfere with the ducting.

WARRANTY

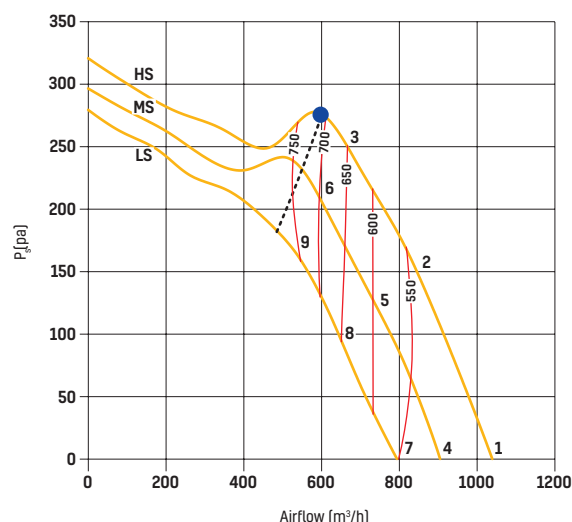
The SILENT MV is covered by a 5 year warranty.

DIMENSIONS (MM)

MODEL	Ø	A	ØB	C	ØD	E	F	G	H
SILMV1000/200		568	198	327	264	145	340	129	164



PERFORMANCE CURVE



SOUND POWER

Sound power level spectrum in dB(A)										
Working Point	63	125	250	500	1000	2000	4000	8000	LwA	
1	Inlet	27	40	50	60	62	64	60	53	68
	Outlet	46	47	54	61	66	65	62	55	70
	Break-Out	17	33	35	44	45	43	35	28	49
2	Inlet	27	38	49	59	61	62	56	49	66
	Outlet	41	43	52	59	63	61	57	50	67
	Break-Out	16	31	34	42	43	40	31	24	47
3	Inlet	28	41	54	63	63	62	58	51	68
	Outlet	32	41	55	62	62	59	56	47	67
	Break-Out	17	33	39	46	45	41	33	26	50
4	Inlet	26	39	49	59	61	63	58	51	67
	Outlet	44	46	53	59	64	64	61	53	69
	Break-Out	15	32	34	43	43	41	33	26	48
5	Inlet	25	37	47	57	59	61	55	48	65
	Outlet	39	42	50	58	62	60	56	49	66
	Break-Out	15	29	33	41	42	39	30	23	46
6	Inlet	26	39	52	61	61	61	56	50	67
	Outlet	31	39	54	60	61	58	54	46	65
	Break-Out	16	32	37	45	43	39	31	24	48
7	Inlet	23	36	46	56	58	60	55	48	64
	Outlet	41	43	50	56	61	61	58	50	66
	Break-Out	12	29	31	40	40	38	30	23	45
8	Inlet	23	34	45	54	57	58	52	45	62
	Outlet	37	39	47	55	59	57	53	46	63
	Break-Out	12	26	30	38	39	36	27	20	43
9	Inlet	24	37	50	59	59	58	54	47	64
	Outlet	28	37	52	58	58	55	52	43	63
	Break-Out	13	20	35	43	41	37	29	22	46