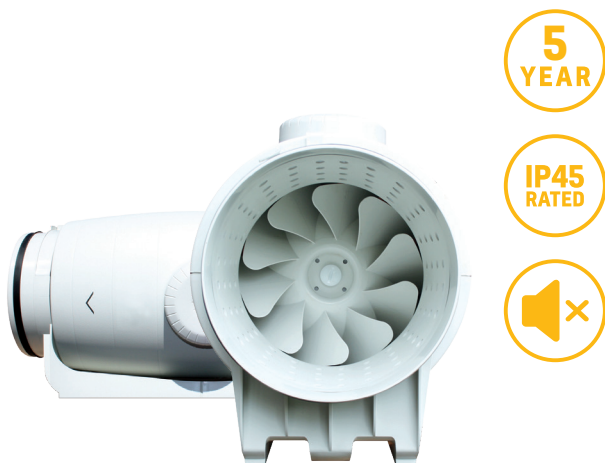


TECHNICAL DATA SHEET

Silent MV 1300/250 | Ultra Quiet In-line Duct Fan



KEY FEATURES

- ✓ Sound absorbent insulation
- ✓ 360° rotating connection box
- ✓ Sealed for life ball bearings
- ✓ Fitted with a 2/3 speed motors
- ✓ 5 year warranty
- ✓ IP44 rated
- ✓ Incredibly silent running
- ✓ High performance
- ✓ Significant energy savings
- ✓ Complies with building regulations
- ✓ Flexible location
- ✓ Easy maintenance

PRODUCT

Ultra quiet and low profile helicocentrifugal in-line fans suitable for a wide range of domestic and commercial applications. Fitted with sound absorbent insulation and manufactured with a with an adjustable two speed 230V 50Hz motor.

Easy to install and maintain, the SILENT MV fans guarantee exceptional performance with significant noise reduction.

APPLICATION SUITABILITY

Presenting the world's quietest in-line fan range in their class, the SILENT MV range creates a quantum leap forward in technology to improve the acoustic performance of up to 12 dB(A) compared with similar products on the market.

The SILENT MV range is the result of an intense R&D, technological and economic investment to ensure that you can be guaranteed of a product range that provides exceptional performance with significant noise reduction. Following extensive aerodynamic testing, we have been able to not only reduce the amount of noise produced, but also ensure that the noise level that is actually emitted is at a far lower frequency, providing a quiet and ambient environment.

INSTALLATION

Full installation guide is enclosed with all products; or sent separately in advance - if required.

MOTOR

Manufactured with an adjustable two speed 230V 50Hz motor.

FAN

The impeller is mixed flow type.

TECHNICAL SPECIFICATIONS

MODEL	SETTING	SILMV1300/250
Speed (RPM)	Low	2030
	Medium	2230
	High	2530
Watts (W)	Low	144
	Medium	163
	High	204
Amps (A)	Low	0.60
	Medium	0.68
	High	0.85
Airflow l/s (m³/h)	Low	219 (790)
	Medium	253 (910)
	High	289 (1040)
dB(A) @ 3m	Low	31
	Medium	33
	High	36
Max. Working Temp (°C)	Low	60
	Medium	
	High	
Ø Duct (mm)	Low	250
	Medium	
	High	

TECHNICAL DATA SHEET

Silent MV 1300/250 | Ultra Quiet In-line Duct Fan

SERVICING / MAINTENANCE

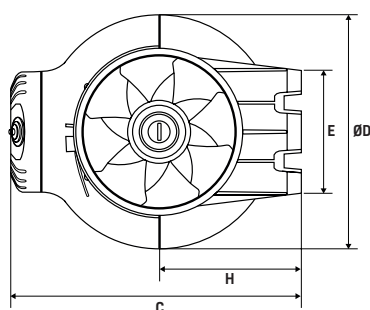
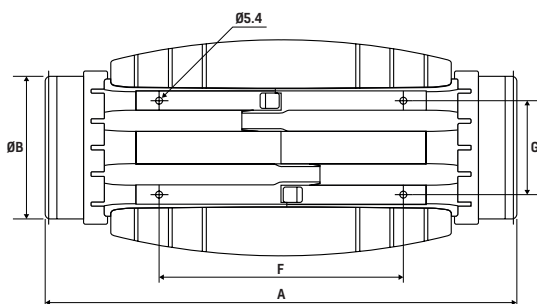
The central body of the SILENT MV can be easily dismantled from the connections to enable rapid maintenance, without the need to interfere with the ducting.

WARRANTY

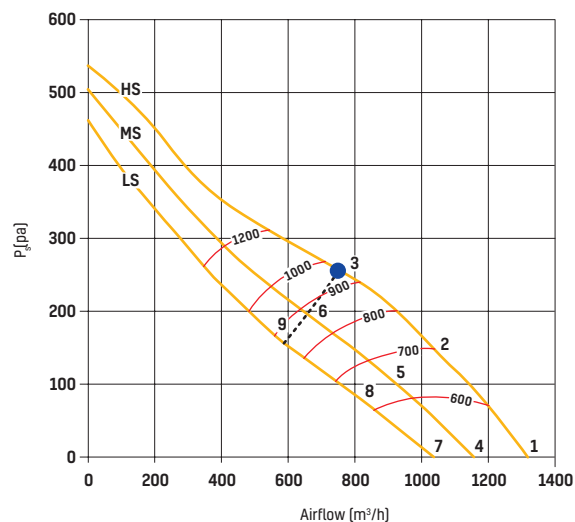
The SILENT MV is covered by a 5 year warranty.

DIMENSIONS (MM)

MODEL	Ø	A	ØB	C	ØD	E	F	G	H
SILMV1300/250		680	248	331	387	140	200	280	171



PERFORMANCE CURVE



SOUND POWER

Sound power level spectrum in dB(A)										
Working Point		63	125	250	500	1000	2000	4000	8000	LwA
1	Inlet	30	42	60	59	62	61	58	52	67
	Outlet	33	45	60	68	72	65	54	48	74
	Break-Out	26	31	46	42	55	48	39	38	57
2	Inlet	32	43	62	60	61	60	56	51	67
	Outlet	30	46	61	69	71	63	52	47	74
	Break-Out	28	32	48	43	54	47	37	37	56
3	Inlet	36	47	63	60	58	58	55	48	67
	Outlet	32	51	62	69	67	60	51	44	72
	Break-Out	32	36	49	43	51	45	36	34	54
4	Inlet	27	39	57	56	59	58	55	49	65
	Outlet	30	42	57	65	69	62	51	45	72
	Break-Out	23	28	43	39	52	45	36	35	54
5	Inlet	29	40	59	57	58	57	53	48	64
	Outlet	27	43	58	66	68	60	49	44	71
	Break-Out	25	29	45	40	51	44	34	34	53
6	Inlet	33	44	60	57	55	55	52	45	64
	Outlet	29	48	59	66	64	57	48	41	69
	Break-Out	29	33	46	40	48	42	33	31	51
7	Inlet	25	37	55	54	57	56	53	47	63
	Outlet	28	40	55	63	67	60	49	43	70
	Break-Out	21	26	41	37	50	43	34	33	52
8	Inlet	27	38	57	55	56	55	51	46	62
	Outlet	25	41	56	64	66	58	47	42	69
	Break-Out	23	27	43	38	49	42	32	32	51
9	Inlet	31	42	58	55	53	53	50	43	62
	Outlet	27	46	57	64	62	55	46	39	67
	Break-Out	27	31	44	38	46	40	31	29	49